

New York State Office for People with Developmental  
Disabilities

## Family Support Services Grant Programs

Respite, Family Training, Advocacy, Counseling & Support Services,  
Crisis Intervention, Voucher Reimbursement, Senior Day Programs,  
Recreation, Non-Medicaid Service Coordination

Long Island Developmental Disabilities Service Office  
415A Oser Avenue  
Hauppauge, NY 11788  
(631) 434-6000  
<http://www.opwdd.ny.gov>

The grant list is available on line at [www.lifssac.com](http://www.lifssac.com)

Revised: March 2019

# TABLE OF CONTENTS

<u>CATEGORY</u>	<u>PG. NUMBERS</u>
Introduction	3
After School/Respite Programs	4-11
School Vacation Respite	12-15
Crisis Intervention	16-22
Family Counseling, Training & Advocacy	23-25
Parent Training for Parents with a D.D.	26
In-Home Respite	27-28
Overnight Freestanding Respite	29-30
Weekend & Recreation Respite	31-39
Sibling Support	40
Town Recreation	41-43
Voucher Reimbursement	44-46
Non-Medicaid Service Coordination	47-50



## INTRODUCTION

This is a comprehensive listing of all Family Support Grants in Nassau and Suffolk Counties. Services are funded by the New York State Office for People with Developmental Disabilities (OPWDD) through the local Long Island Developmental Disabilities Services Office (L.I.D.D.S.O.). The programs help developmentally disabled Long Islanders and their families.

Developmental Disabilities include mental retardation, neurological impairment, epilepsy, cerebral palsy and autism. Participating individuals must meet the OPWDD eligibility criteria. Eligibility information is available on the OPWDD website under General Information & Publications/Forms.

### **THE FOLLOWING IS A BRIEF DESCRIPTION OF THE SERVICES THAT ARE PROVIDED:**

**After School & Weekday Respite Program & School Vacation Respite:** Provides services to developmentally disabled children or adults for several hours up to 5 days a week.

**Crisis Intervention:** Services include behavioral assessment and intervention; training of families; linkage and referral; emergency in-home and out-of-home respite.

**Parent Training for Parents with a D.D:** Provides parent skills and training for parents with developmental disabilities.

**Family Counseling, Training & Advocacy:** Provides counseling, training, behavior management and advocacy services for the family and the developmentally disabled person, at the agency site or in the home.

**In-Home Respite:** Matches trained respite workers with families to provide scheduled care for individuals with developmental disabilities in their homes.

**Overnight Freestanding Respite:** Scheduled respite in certified agency operated respite homes, weekends or weekdays.

**Respite Recreation:** Provides care through recreation and social activities at various agencies in Nassau and Suffolk Counties.

**Sibling Support:** Provides services to siblings through support groups, individual counseling or recreational activities.

**Town Recreation:** Provides recreation and social activities to town residents with developmental disabilities.

**Voucher/Reimbursement:** Families are reimbursed for purchased goods or services for their developmentally disabled person which cannot be funded through other resources. Services in the grant are not reimbursable.

**Non-Medicaid Service Coordination:** Short term service coordination to assist developmentally disabled individuals with the planning for and accessing of desired services and supports.



## AFTER SCHOOL & WEEKDAY RESPITE PROGRAMS

AGENCY	LOCATION	SERVICE HOURS	POPULATION SERVED	FEE	COMMENTS	CONTACT PERSON
<b><u>After School/Respite Program &amp; School Vacation Respite:</u></b> Provides services to developmentally disabled children or adults for several hours up to 5 days a week.						
A-1 Universal Care, Inc.	400 Post Ave, Suite 302, Westbury, NY 11590	Tuesdays, Wednesdays, & Fridays 3pm-6pm	Ages: 7 and up Developmentally Disabled	No Fee	Nassau County Increase their socialization and interpersonal skills through sports, games, art and crafts, music and other activities.	Donna Harris (516) 338-8777 x12 <a href="mailto:dharris@a1universalcare.org">dharris@a1universalcare.org</a>
Association for Children with Down Syndrome (ACDS)	4 Fern Place Plainview	Wednesdays 4:30pm-7pm	Ages: 5 years & up Down Syndrome & Developmentally Disabled	No Fee	Nassau & Suffolk Counties Dance Class – Ballet, tap, jazz and modern techniques	Erica Lepurage (516) 605-2391 <a href="mailto:elepurage@acds.org">elepurage@acds.org</a>  Brian Laubis (516) 605-2391 <a href="mailto:blaubis@acds.org">blaubis@acds.org</a>
Association for Children with Down Syndrome (ACDS)	4 Fern Place Plainview	Thursdays 5:30pm - 8:30pm	Ages: 15 years & up Down Syndrome & Developmentally Disabled Teen program	Fee	Nassau & Suffolk Counties Mix of sessions in the community and at ACDS.	Erica Lepurage (516) 605-2391 <a href="mailto:elepurage@acds.org">elepurage@acds.org</a>  Brian Laubis (516) 605-2391 <a href="mailto:blaubis@acds.org">blaubis@acds.org</a>
Association for Children with Down Syndrome (ACDS)	4 Fern Place Plainview	Mondays 5:30-8pm Fall & Spring	Ages: 11-15 years Developmentally Disabled children	No Fee	Nassau & Suffolk Counties The tween socialization program offers age appropriate activities in ACDS teen lounge, gym and Karaoke Café.	Erica Lepurage (516) 605-2391 <a href="mailto:elepurage@acds.org">elepurage@acds.org</a>  Brian Laubis (516) 605-2391 <a href="mailto:blaubis@acds.org">blaubis@acds.org</a>



# AFTER SCHOOL & WEEKDAY RESPITE PROGRAMS

AGENCY	LOCATION	SERVICE HOURS	POPULATION SERVED	FEE	COMMENTS	CONTACT PERSON
--------	----------	---------------	-------------------	-----	----------	----------------

**After School/Respite Program & School Vacation Respite:** Provides services to developmentally disabled children or adults for several hours up to 5 days a week.

Adults & Children with Learning Disabilities (ACLD)	Levittown Site Based Respite 2934 Hempstead Turnpike, Levittown, NY 11756	Thursdays & Fridays 3:30 – 7:30pm	Ages: 21 years & up Developmentally Disabled	No Fee	The Levittown Respite Program operates on Thursday and Friday all year round, excluding certain observed holidays. The program operates from 3:30 -7:30 p.m., (dinner is provided). Participation in the program offers the people we support an opportunity to socialize and engage in activities of their choice including in-house, leisure/recreational and selected community outings.	Stellie Louis (516) 822-0028 x.358 <a href="mailto:louiss@acls.org">louiss@acls.org</a>
---	--	--------------------------------------	---	--------	---	---



# AFTER SCHOOL & WEEKDAY RESPITE PROGRAMS

AGENCY	LOCATION	SERVICE HOURS	POPULATION SERVED	FEE	COMMENTS	CONTACT PERSON
--------	----------	---------------	-------------------	-----	----------	----------------

**After School/Respite Program & School Vacation Respite:** Provides services to developmentally disabled children or adults for several hours up to 5 days a week.

<p>Adults &amp; Children with Learning Disabilities (ACL D)</p>	<p>Main Location: Spiegel Children's Center located at 67 Greenwood Road Bay Shore NY 11706 or Our Satellite Location at The Great South Bay YMCA located at 200 West Main St Bay Shore NY 11706</p>	<p>Mon.-Fri. 2:30 pm – 5:45 pm</p>	<p>Ages: 5–21 years Developmentally Disabled</p>	<p>No cost to families</p>	<p>Nassau &amp; Suffolk counties; transportation may be provided by a child's school district to the program, with parent pick-up upon dismissal. Our program is a Therapeutic Recreation based program where our main goal is working on promoting socialization between peers and facilitating interactions with other children. Staff ratios vary, depending on the child's individual need. We follow the school calendar of the Bay Shore School District, which includes a 6 week summer session option. Our After School site at the Great South Bay YMCA provides a potential inclusive setting option for children 6-9 years old.</p>	<p>Linda Eisen (631) 647-9577 x232 <a href="mailto:eisenl@alcd.org">eisenl@alcd.org</a></p>



# AFTER SCHOOL & WEEKDAY RESPITE PROGRAMS

AGENCY	LOCATION	SERVICE HOURS	POPULATION SERVED	FEE	COMMENTS	CONTACT PERSON
--------	----------	---------------	-------------------	-----	----------	----------------

**After School/Respite Program & School Vacation Respite:** Provides services to developmentally disabled children or adults for several hours up to 5 days a week.

East End Special Players	Bridge Hampton Senior Center 585 Sag Harbor Turnpike Bridge Hampton	Thursdays 4pm – 7:30pm	Adults Developmentally Disabled	No Fee	Explore different arts such as sculpture, painting, dance and cooking. No transportation. Not Bilingual. Wheelchair Assessable Accepts individuals enrolled in Self Direction	Matthew Kuriloff 631-320-6099 <a href="mailto:mkuriloff@icloud.com">mkuriloff@icloud.com</a>  Paul Rogers 631-726-4609 paul@chaleffandrogers.com  Jacqui Leader 631-678-7560 jbubbuster@aol.com
--------------------------	---	---------------------------	---------------------------------------	-----------	--	---



## AFTER SCHOOL & WEEKDAY RESPITE PROGRAMS

AGENCY	LOCATION	SERVICE HOURS	POPULATION SERVED	FEE	COMMENTS	CONTACT PERSON
--------	----------	---------------	-------------------	-----	----------	----------------

**After School/Respite Program & School Vacation Respite:** Provides services to developmentally disabled children or adults for several hours up to 5 days a week.

Economic Opportunity Council (EOC)	320 Carlton Avenue Suite 7800 Central Islip	Mondays, Fridays 2:00 pm-6:00pm	Ages: 21 years & up Developmentally Disabled	No Fee	To provide after school respite to individuals with developmental disabilities. The program will foster the opportunity of learning through athletics, arts and crafts and community involvement. The Hourly Respite program provided out of home activities to individuals after school/program.	Cicely Hobbs (631) 666-6471 x.635 <a href="mailto:chobbs@eoc-suffolk.com">chobbs@eoc-suffolk.com</a> Simone Holder (631) 666-6471 x.602 <a href="mailto:sholder@eoc-suffolk.com">sholder@eoc-suffolk.com</a>
Family Counseling Services - a division of Family Services League	William Floyd Family Center, 338 Blanco Drive, Mastic Beach, NY 11951	Social Skills Program runs 8 sessions at a time and 3 times per year. Mondays 6p-7p	Ages: 5-18 years Developmentally Disabled	No fee	Expanding on social skills for children-offered in conjunction with parent support group (not required but recommended) Does not accept individuals enrolled in self direction	Brianna Palisi  (631) 998-0016 <a href="mailto:Brianna.Palisi@fsl-li.org">Brianna.Palisi@fsl-li.org</a>
Family Residences & Essential Enterprises, Inc. (FREE)	1404 Stony Brook Road, Stony Brook NY 11790	Mon.-Fri. Afternoons 2:00pm – 5pm	Ages: 12 years & up Developmentally Disabled	No Fee	Suffolk County Only Transportation on limited basis	Danielle Penesky 631-273-3700 ext. 3635 <a href="mailto:dpenesky01@familyres.org">dpenesky01@familyres.org</a> Caitlin Eamotte <a href="mailto:Ceamotte01@familyres.org">Ceamotte01@familyres.org</a>





## AFTER SCHOOL & WEEKDAY RESPITE PROGRAMS

AGENCY	LOCATION	SERVICE HOURS	POPULATION SERVED	FEE	COMMENTS	CONTACT PERSON
--------	----------	---------------	-------------------	-----	----------	----------------

**After School/Respite Program & School Vacation Respite:** Provides services to developmentally disabled children or adults for several hours up to 5 days a week.

Family Residences & Essential Enterprises, Inc. (FREE)	120 Plant Avenue Hauppauge	Mon.-Fri. Afternoons 2:00pm – 5pm	Ages: 12 years & up Developmentally Disabled	No Fee	Suffolk County Only Transportation on limited basis	631-273-4098 Danielle Penesky 631-273-3700 ext. 3635 <a href="mailto:dpenesky01@familyres.org">dpenesky01@familyres.org</a>  Caitlin Eamotte <a href="mailto:Ceamotte01@familyres.org">Ceamotte01@familyres.org</a> 631-273-4098
Eden II/Genesis	600 Newbridge Rd  East Meadow, NY 11554	Mondays & Thursdays 3pm-5pm	Ages: 5-21 years Autism	\$15 per day	Nassau & Suffolk Counties Activities include games, fitness/exercise, arts and crafts, gym/outdoor time, vocational/recreation lessons, and cooking all lead by instructor.	Jillian Panni 516-937-1397 x.1311 <a href="mailto:jpanni@eden2.org">jpanni@eden2.org</a>
Mill Neck Services	501 S. Broadway Hicksville	Thursdays 6-8:30pm	Deaf & Developmentally Disabled	No Fee	Nassau & Suffolk Counties Literacy Program Accepts individuals enrolled in self direction	Loretta Murray (516) 922-3818 <a href="mailto:deafesq@millneck.org">deafesq@millneck.org</a> John Saal (516) 322-4003 <a href="mailto:jsaal@millneck.org">jsaal@millneck.org</a>
SCO Family of Services	117 Comac Road	Thursdays	Ages: 21 years & up Developmentally	\$2 per		Donna Delarosa



## AFTER SCHOOL & WEEKDAY RESPITE PROGRAMS

AGENCY	LOCATION	SERVICE HOURS	POPULATION SERVED	FEE	COMMENTS	CONTACT PERSON
--------	----------	---------------	-------------------	-----	----------	----------------

**After School/Respite Program & School Vacation Respite:** Provides services to developmentally disabled children or adults for several hours up to 5 days a week.

Drop-in Lounge	Ronkonkoma	5:30-8:30 pm	Disabled adEEDaults living at home	we ek	The Drop-in Lounge offers art, music, and games for adults who function with minimal supervision. Visitors can participate in activities or relax and socialize. The lounge is wheelchair accessible and closed on legal holidays.	(631) 639-3610 <a href="mailto:ddelarosa@sco.org">ddelarosa@sco.org</a>
Sid Jacobson Jewish Community Center	300 Forest Drive East Hills	Mon. - Fri. 3:00pm-5:15pm Closed on school holidays & vacations. Follows Roslyn school calendar	Ages: 5-21 years Developmentally Disabled and Autistic Children	No Fee	Nassau & Suffolk Counties Wheelchair Accessible Daily movement class, music, art, cooking, pet therapy and other social and daily life skill classes.	Amanda Burns (516) 484-1545 x175 <a href="mailto:aburns@sjcc.org">aburns@sjcc.org</a>
United Cerebral Palsy Association of Greater Suffolk County (UCP of Suffolk)	250 Marcus Blvd. Hauppauge	Mondays & Wednesdays 3:30pm-6:00pm	Developmentally Disabled Adults	No Fee	Suffolk County Only Adapted Creative Arts Accepts individuals enrolled in self direction	Joan Sarrica 631-232-0011 ext. 638 <a href="mailto:jsarrica@ucp-suffolk.org">jsarrica@ucp-suffolk.org</a>
United Cerebral Palsy Association of Greater Suffolk County (UCP of Suffolk)	250 Marcus Blvd. Hauppauge	3:00pm-6pm two days a week	Developmentally Disabled 18+	No Fee	Suffolk County Only Athletic Program Sometimes school transportation to program available	Joan Sarrica 631-232-0011 ext. 638 <a href="mailto:jsarrica@ucp-suffolk.org">jsarrica@ucp-suffolk.org</a>



# AFTER SCHOOL & WEEKDAY RESPITE PROGRAMS

AGENCY	LOCATION	SERVICE HOURS	POPULATION SERVED	FEE	COMMENTS	CONTACT PERSON
--------	----------	---------------	-------------------	-----	----------	----------------

**After School/Respite Program & School Vacation Respite:** Provides services to developmentally disabled children or adults for several hours up to 5 days a week.

					Accepts individuals enrolled in self direction	
YAI -National Institute for People w/Disabilities (YAI/NIPD)	555 Washington Ave. Brentwood NY 11717  217 Middle Country Road, Coram, NY 11727	Mon-Fri. 2:45pm-5:30pm	Ages: 13-21 years Developmentally Disabled – Suffolk County	No Fee	This program provides appropriate leisure and recreational activities, as well as supervision for children with IDD. Services are available to families Monday to Friday after noons from 2:45 pm to 5:30 pm. Our overall objective is to provide social opportunities for children and give families a reprieve from their daily care giving responsibilities. This program functions on a 1:5 Staff to Student Ratio. Accepts individuals enrolled in self direction	Supervisor: Kathleen Huguenin, <a href="mailto:kathleen.huguenin@yai.org">kathleen.huguenin@yai.org</a> 631-967-7121 Grahame Morgan 631-230-0310, <a href="mailto:grahame.morgan@yai.org">grahame.morgan@yai.org</a>
YAI -National Institute for People w/Disabilities	Broader Horizons	Brentwood - Tuesday & Friday: 5:30pm – 9:30pm	Adults Autism Spectrum and/or Mild	No Fee	Broader Horizons is a community based recreational program for adults primarily with autism spectrum	Kathleen Huguenin, <a href="mailto:kathleen.huguenin@yai.org">kathleen.huguenin@yai.org</a> 631-967-7121



# AFTER SCHOOL & WEEKDAY RESPITE PROGRAMS

AGENCY	LOCATION	SERVICE HOURS	POPULATION SERVED	FEE	COMMENTS	CONTACT PERSON
--------	----------	---------------	-------------------	-----	----------	----------------

**After School/Respite Program & School Vacation Respite:** Provides services to developmentally disabled children or adults for several hours up to 5 days a week.

(YAI/NIPD)	555 Washington Ave. Brentwood NY 11717  217 Middle Country Road, Coram, NY 11727	Coram -Mondays &Wednesdays 5:30pm – 9:30pm	Developmental Disability		disorders. The program offers the opportunity for individuals to make friends and socialize through group activities. It will provide a supportive and supervised environment in which participants can expand their social circles and become active members of the community. Individuals will enjoy leisure and recreational activities that will focus on improving and developing self-esteem, maturity and independence. Accepts individuals enrolled in self direction  Grahame Morgan 631-230-0310, <a href="mailto:grahame.morgan@yai.org">grahame.morgan@yai.org</a>
------------	--	---	--------------------------	--	--



# SCHOOL VACATION RESPITE

AGENCY	LOCATION	SERVICE HOURS	POPULATION SERVED	FEE	COMMENTS	CONTACT PERSON
--------	----------	---------------	-------------------	-----	----------	----------------

**After School/Respite Program & School Vacation Respite:** Provides services to developmentally disabled children or adults for several hours up to 5 days a week.

Adults & Children w/Learning & Developmental Disabilities (ACLD)	Great South Bay YMCA 67 Greenwood Rd. Bay Shore	Mon.-Fri. 9am-4pm 6 week session – end of June – early August	Ages: 15-17 years Developmentally Disabled	\$400	Nassau & Suffolk Counties Counselor in Training Day Camp experience Parents provide transportation	Linda Eisen (631) 647-9577 x232 <a href="mailto:eisenl@acld.org">eisenl@acld.org</a>
Adults & Children with Learning & Developmental Disabilities (ACLD)	Great South Bay YMCA 200 W. Main Street/ 67 Greenwood Rd. Bay Shore	Mon.-Fri 9am-4pm 3 week session June/July or July/August	Ages: 6-12 years Developmentally Disabled	\$300	Nassau & Suffolk Counties Summer Day Camp experience. Parents Provide transportation	Linda Eisen (631) 647-9577 x232 <a href="mailto:eisenl@acld.org">eisenl@acld.org</a>
Adults & Children with Learning & Developmental Disabilities (ACLD)	Great South Bay YMCA 200 W. Main St. Bay Shore	School Vacations Select Days 9am – 4pm	Ages 5-12 years Developmentally Disabled Children	\$60	Nassau & Suffolk Counties Day Camp Experience Parents provide transportation	Linda Eisen (631) 647-9577 x232 <a href="mailto:eisenl@acld.org">eisenl@acld.org</a>
Adults & Children with Learning & Development Disabilities (ACLD)	Y-JCC 74 Hauppauge Rd. Commack	Feb/Apr School Vacation 9am-3pm Select Days	Ages 5-12 years Developmentally Disabled Children	\$60	Nassau & Suffolk Counties Day Camp Experience Parents provide transportation	Linda Eisen (631) 647-9577 x232 <a href="mailto:eisenl@acld.org">eisenl@acld.org</a>
Bais Ezra	1268 E 14 <sup>th</sup> St. Brooklyn NY	Mon.-Thus. 10am -3:30pm Friday – 10am – 1:30pm	Ages: 5-21 years Developmentally Disabled & Autistic	No Fee	Nassau County Includes transportation Programs runs for 7 nights at the end of August in Catskills	Hillary Zimmern <a href="mailto:Hillary_zimmern@ohelfamily.org">Hillary_zimmern@ohelfamily.org</a> (718) 686-3486



## SCHOOL VACATION RESPITE

AGENCY	LOCATION	SERVICE HOURS	POPULATION SERVED	FEE	COMMENTS	CONTACT PERSON
--------	----------	---------------	-------------------	-----	----------	----------------

**After School/Respite Program & School Vacation Respite:** Provides services to developmentally disabled children or adults for several hours up to 5 days a week.

Brookville Center for Children's Services	189 Wheatley Rd. Brookville	Christmas/winter break, Easter/Passover break, & 1 week in August 10am-3pm	Ages: 3-21 years Developmentally Disabled children	\$200 per session	Nassau & Suffolk Counties Respite during school holidays Wheelchair Accessible Does not accept individuals enrolled in self direction	Denise Gaughan 516-626-1075 x 3364 <a href="mailto:dgaughan@brookvillecenter.org">dgaughan@brookvillecenter.org</a>
Developmental Disabilities Institute (DDI)	90 Air Park Drive Ronkonkoma	All School Breaks/Holidays Hours vary	Ages: 3 to 7 years	No fee	Nassau & Suffolk Counties Project "SOAR"- No transportation	Donna Sadowsky 631-580-4002 <a href="mailto:donna.sadowsky@ddiny.org">donna.sadowsky@ddiny.org</a> Christine Racca (631) 580-4004 christine.racca@ddiny.org
East End Disability Association (EEDA)	Site rotates throughout Eastern Suffolk	Mon.-Fri.	Ages: 5-21 years Developmentally Disabled	Donation of \$10 per day	Program runs during school vacations (except Christmas)	Annetal Spencer <a href="mailto:AnnetalS@eed-a.org">AnnetalS@eed-a.org</a> (631)369-7345 x207
Family Residences & Essential Enterprises, Inc. (FREE)	191 Sweet Hollow Road Old Bethpage	Mon-Fri. 9am-4pm During school vacations breaks; Presidents Week, Spring Break, Winter Break, and 3 weeks during the Summer	Ages: 5-21 years Children with Autism and other Developmental Disabilities	Small activity fee may apply	Nassau & Suffolk Counties Transportation not included from site to site Transportation included for all outings off site Must provide lunch Wheelchair accessible	Caitlin Eamotte 631-273-4098 <a href="mailto:ceamotte01@familyres.org">ceamotte01@familyres.org</a>



## SCHOOL VACATION RESPITE

AGENCY	LOCATION	SERVICE HOURS	POPULATION SERVED	FEE	COMMENTS	CONTACT PERSON
--------	----------	---------------	-------------------	-----	----------	----------------

**After School/Respite Program & School Vacation Respite:** Provides services to developmentally disabled children or adults for several hours up to 5 days a week.

Eden II/Genesis	600 Newbridge Rd East Meadow, NY 11554	6 overnight trips per year Fridays – Sundays	Ages: 5 and up Individuals with Autism	\$250	Nassau & Suffolk Counties 6 people per trip Transportation is not included	Jillian Panni 516-937-1397 x.1311 <a href="mailto:jpanni@eden2.org">jpanni@eden2.org</a>
Eden II/Genesis	600 Newbridge Rd East Meadow, NY 11554	Day Trips All Holiday breaks 9am – 3pm	Ages: 5-21years Individuals with Autism	\$40 per day	Nassau & Suffolk Counties	Jillian Panni 516-937-1397 x.1311 <a href="mailto:jpanni@eden2.org">jpanni@eden2.org</a>
Horseability, Inc. PO Box 410-1 Old Westbury, NY	238 Round Swamp Road Melville (camp)	Summer Camp 9am – 3:30pm Mon.-Fri. 1 week in August	Ages: 3 years & up Developmentally Disabled	Camp Fee: \$850	Nassau & Suffolk Counties Wheelchair Accessible Scholarship Available	Jamie Thomas Martin (516) 333-6151 x.111 <a href="mailto:jamie@horseability.org">jamie@horseability.org</a>
Mid-Island Y Jewish Community Center	45 Manetto Hill Rd. Plainview	School Vacation Days 9am – 2:30pm	Children, Teens & Young Adults Autism Spectrum Disorder and developmental delays	\$25 fee	Nassau & Suffolk Counties Program includes arts & crafts, swimming, music, sports, & inclusion opportunities Does not accept individuals enrolled in self direction	Sharon Hanover (516) 822-3535 x.332 <a href="mailto:shanover@miyjcc.org">shanover@miyjcc.org</a>
Nassau/Suffolk Services for the Autistic (NSSA)	80 Hauppauge Road Commack	1 week to be determined prior to session Mon.-Fri. 9:30 – 3:30 pm	Ages: 5-21 years Individuals with Autism	\$125 + sliding scale	Nassau & Suffolk Counties Summer Camp Program No transportation Does not accept individuals enrolled in self direction	Stacey Agosta (631) 462-0386 <a href="mailto:sagosta@nssa.net">sagosta@nssa.net</a> Christine Rodriguez (631) 462-0386 <a href="mailto:crodriguez@nssa.net">crodriguez@nssa.net</a>



# SCHOOL VACATION RESPITE

AGENCY	LOCATION	SERVICE HOURS	POPULATION SERVED	FEE	COMMENTS	CONTACT PERSON
--------	----------	---------------	-------------------	-----	----------	----------------

**After School/Respite Program & School Vacation Respite:** Provides services to developmentally disabled children or adults for several hours up to 5 days a week.

					Does not accept individuals enrolled in self direction	
Sid Jacobson Jewish Community Center	300 Forrest Drive East Hills	3 <sup>rd</sup> week of August 9am – 3:30pm	Ages:5-22 years Developmentally Disabled	No Fee	Post Summer Camp Program Accepts individuals enrolled in self direction	Amanda Burns (516) 484-1545 x175 <a href="mailto:aburns@sjcc.org">aburns@sjcc.org</a>
Variety Child Learning Center	47 Humphrey Drive Syosset	10am – 2pm School Vacations	Ages: 3 – 10 years Developmentally Disabled Children with Behavioral Challenges	No Fee	No transportation or Lunch Provided Does not accept individuals enrolled in self direction	Rebecca Esquillin (516)921-7171 x. 2104 <a href="mailto:resquillin@vclc.org">resquillin@vclc.org</a>





# CRISIS INTERVENTION

AGENCY	LOCATION	SERVICE HOURS	POPULATION SERVED	FEE	COMMENTS	CONTACT PERSON
--------	----------	---------------	-------------------	-----	----------	----------------

**Crisis Intervention:** Services include behavioral assessment and intervention; training of families; linkage and referral; emergency in-home and out-of-home respite.

<p>Angela's House</p> <p><b>Medically Frail Children</b></p> <p>NMSC Crisis</p>	<p>P.O. Box 5052 Hauppauge</p>	<p>Monday – Friday 9am – 5pm</p>	<p><b>Medically Frail, Technology Dependent, Chronically Ill and Developmentally Disabled 18 years or younger</b></p>	<p>No Fee</p>	<p>Intensive Crisis Non-Medicaid Service Coordination to children that are medically fragile, chronically ill and/or technology dependent. Our Non-Medicaid service coordinator will work together with each child and family to access the full range of eligible services and resources</p>	<p>Colleen Kunkel 631-761-0128 <a href="mailto:ckunkel@angelashouse.org">ckunkel@angelashouse.org</a></p>
<p>Angela's House</p> <p><b>Medically Frail Children</b></p> <p>Emergency Respite Voucher Reimbursement</p>	<p>P.O. Box 5052 Hauppauge</p>	<p>Individually scheduled</p>	<p><b>Medically Frail, Technology Dependent, Chronically Ill and Developmentally Disabled 18 years or younger</b></p>	<p>No Fee</p>	<p>Medically frail/technology dependent/chronically ill children, too compromised, to attend typical respite options. Due to the nature of these children's disabilities, multiple levels of planning must be considered. Each child will be eligible for a minimum of 24 hours of emergency respite. Angela's House will synchronize all services necessary to provide Emergency Respite opportunities in the child's own home or in another suitable safe environment.</p>	<p>Colleen Kunkel 631-761-0128 <a href="mailto:ckunkel@angelashouse.org">ckunkel@angelashouse.org</a></p>



## CRISIS INTERVENTION

AGENCY	LOCATION	SERVICE HOURS	POPULATION SERVED	FEE	COMMENTS	CONTACT PERSON
--------	----------	---------------	-------------------	-----	----------	----------------

**Crisis Intervention:** Services include behavioral assessment and intervention; training of families; linkage and referral; emergency in-home and out-of-home respite.

East End Disability Associates (EEDA)	729A Route 25A Rocky Point NY	24 hours a day 7 days a week	Ages: 7 and up Developmentally Disabled	No Fee	Suffolk County Not wheelchair accessible Reduce intensity of crisis whether physical, emotional, or mental so they can return to previous level of care.	Mobile Crisis: Hotline (631) 369-2585 Crisis House: Kim Murphy (631) 849-5582 <a href="mailto:Kimm@eed-a.org">Kimm@eed-a.org</a>
Family Residences & Essential Enterprises, Inc. (FREE)	7 Dogwood Lane Westbury, NY 11590	24 hours a day 7 days a week	Ages: 16 years & up Developmentally Disabled	No Fee	Nassau & Suffolk Counties - The Assessment and Crisis Residences were developed to provide support and structure for individuals experiencing behavioral and emotional challenges. Various assessment tools and techniques are utilized to evaluate each individual. Recommendations for treatment plans are made to help stabilize the individual so that they can return to their usual living environment.	Dana McCartan 516 368 2164 <a href="mailto:Dmccartan01@familyres.org">Dmccartan01@familyres.org</a>  Irene Williams 516 8701600 ext 1683 <a href="mailto:IPW@familyres.org">IPW@familyres.org</a>
Family Residences & Essential Enterprises, Inc. (FREE)	25 Wood Road Centereach Crisis House	24 hours a day 7 days a week	Ages: 16 years & up Developmentally Disabled	No Fee	The Assessment and Crisis Residences were developed to provide support and structure for individuals experiencing behavioral and emotional challenges. Various assessment tools and techniques are utilized to evaluate each individual. Recommendations for treatment plans	Dana McCartan 516 368 2164 <a href="mailto:Dmccartan01@familyres.org">Dmccartan01@familyres.org</a>  Irene Williams 516 8701600 ext 1683 <a href="mailto:IPW@familyres.org">IPW@familyres.org</a>



# CRISIS INTERVENTION

AGENCY	LOCATION	SERVICE HOURS	POPULATION SERVED	FEE	COMMENTS	CONTACT PERSON
--------	----------	---------------	-------------------	-----	----------	----------------

**Crisis Intervention:** Services include behavioral assessment and intervention; training of families; linkage and referral; emergency in-home and out-of-home respite.

					are made to help stabilize the individual so that they can return to their usual living environment.	
Family Residences & Essential Enterprises, Inc. (FREE)	120 Plant Avenue Hauppauge	24 hours a day 7 days a week	Ages: 5 years & up Developmentally Disabled and their families	No Fee	Nassau and Suffolk County area. Mobile Crisis Intervention aims to reduce the intensity of an individual's emotional, mental, physical and behavioral reactions to a crisis; to help individuals return to their level of functioning before the crisis and to assist the family unit to maintain a stable environment within the home.	Dana McCartan 516 368 2164 <a href="mailto:Dmccartan01@familyres.org">Dmccartan01@familyres.org</a>  Irene Williams 516 8701600 ext 1683 <a href="mailto:IPW@familyres.org">IPW@familyres.org</a>
Family Residences & Essential Enterprises, Inc. (FREE)	12 Old East Neck Rd. Melville	24 hours a day 7 days a week	Ages: 16 years & up Developmentally Disabled	No Fee	Nassau & Suffolk Counties Ambulatory Program Description: The Assessment and Crisis Residences were developed to provide support and structure for individuals experiencing behavioral and emotional challenges. Various assessment tools and techniques are utilized to evaluate each individual. Recommendations for treatment plans are made to help stabilize the individual so that they can return to their usual living environment.	Dana McCartan 516 368 2164 <a href="mailto:Dmccartan01@familyres.org">Dmccartan01@familyres.org</a>  Irene Williams 516 8701600 ext 1683 <a href="mailto:IPW@familyres.org">IPW@familyres.org</a>



# CRISIS INTERVENTION

AGENCY	LOCATION	SERVICE HOURS	POPULATION SERVED	FEE	COMMENTS	CONTACT PERSON
--------	----------	---------------	-------------------	-----	----------	----------------

**Crisis Intervention:** Services include behavioral assessment and intervention; training of families; linkage and referral; emergency in-home and out-of-home respite.

Family Residences & Essential Enterprises, Inc. (FREE)	120 Plant Avenue Hauppauge	24 hours a day 7 days a week	Ages: 5 years and up Developmentally Disabled and their families	No Fee	Nassau & Suffolk Counties Crisis intervention aims to reduce the intensity of an individual's emotional, mental, physical and behavioral reactions to a crisis; to help individuals return to their level of functioning before the crisis, and assist the family unit to maintain a stable environment within the home	Christina Abbinanti (516) 870-1600 x.1880 <a href="mailto:Cabbinanti01@familyres.org">Cabbinanti01@familyres.org</a> Anu Arnold, MA, LMSW (516) 870-1600 x.1880 x.1623 <a href="mailto:AArnold@familyres.org">AArnold@familyres.org</a>  24 hour crisis beeper/hotline: (631)476-2068
Eden II/Genesis	600 Newbridge Rd  East Meadow, NY 11554	As Needed	Ages: 5-21 years Children with Autism	No Fee	Nassau & Suffolk Counties Crisis respite & behavioral management Parent Training	Jillian Panni 516-937-1397 x.1311 <a href="mailto:jpanni@eden2.org">jpanni@eden2.org</a>
Human First, Inc.	1 Michael Ave. Farmingdale, N.Y. 11735	365 days a year Hotline is available 24/7	Children and Adults with Developmental Disabilities	No Fee	Nassau & Suffolk Counties Human First Mobile Behavioral Intervention Specialist provides the following services within the individual's private residence:	Andrea Morgan (631) 321-1101 <a href="mailto:amorgan@humanfirst.org">amorgan@humanfirst.org</a>  <b>Hotline – (888) 224-7331</b>



# CRISIS INTERVENTION

AGENCY	LOCATION	SERVICE HOURS	POPULATION SERVED	FEE	COMMENTS	CONTACT PERSON
--------	----------	---------------	-------------------	-----	----------	----------------

**Crisis Intervention:** Services include behavioral assessment and intervention; training of families; linkage and referral; emergency in-home and out-of-home respite.

					-Sectional behavioral analysis and behavior/psychological assessment -Develop and monitor behavior support plans - Assist with parent training and provide psycho-education as needed	
Independent Group Home Living, Inc. (IGHL)	356 South Sunrise Service Road Center Moriches	24 hrs a day 7 days a week	Ages: 3 years and up Developmentally Disabled	No Fee	Nassau & Suffolk Counties. Provides short/long term crisis respite which provides consistent, nurturing and assuring environment to live in until a placement housing is secured.	Tracey DelDuca (631) 878-0636 <a href="mailto:tdelduca@ighl.org">tdelduca@ighl.org</a> Michelle DiGiantomasso (631) 878-0636 <a href="mailto:mdigiantomasso@ighl.org">mdigiantomasso@ighl.org</a>
Innovative Resources for Independence (IRI)	112-40 Francis Lewis Blvd, Queens Village, NY, 11429	Day-Eve	Ages: 15 years & up Developmentally Disabled, Autistic and those with challenging behaviors	No Fee	Nassau County Only Will provide emergency respite services	Estefania Tineo (917) 717-1325 <a href="mailto:estefania.tineo@in-res.org">estefania.tineo@in-res.org</a> Al Gibson (718)-805-6796 <a href="mailto:Al.gibson@in-res.org">Al.gibson@in-res.org</a>



# FAMILY COUNSELING, TRAINING & ADVOCACY

AGENCY	LOCATION	SERVICE HOURS	POPULATION SERVED	FEE	COMMENTS	CONTACT PERSON
<b>Family Counseling, Training &amp; Advocacy:</b> Provides counseling, training, behavior management and advocacy services for the family and the developmentally disabled person, at the agency site or in the home.						
Angela's House <b>Medically Frail Children</b>	P.O. Box 5052 Hauppauge	Day & Evening	Medically frail, chronically ill, technology dependent and developmentally disabled	No Fee	Nassau & Suffolk Counties	Colleen Kunkel 631-761-0128 <a href="mailto:ckunkel@angelashouse.org">ckunkel@angelashouse.org</a>
Center for Rapid Recovery (CRR)	312 Greenwich St. Hempstead	Mon.-Fri. 9am-5pm	Families with Developmentally Disabled children and adults. Multicultural families	No Fee	Nassau & Suffolk Counties Bilingual public awareness information, advocacy, and referral	Doris Yeboah (516) 292-6449 x.121 <a href="mailto:dyeboah@rapidrecovery.org">dyeboah@rapidrecovery.org</a> Andrea Newalis (516) 292-6449 x.110 <a href="mailto:anewalis@rapidrecovery.org">anewalis@rapidrecovery.org</a>
Developmental Disabilities Institute (DDI)	Various Locations	Individually scheduled	Adults & children with developmental disabilities and their families	No Fee	Nassau & Suffolk Counties Program provides short-term behavioral consultation and parent training to families who have children diagnosed with developmental disability that reside at home and exhibit serious challenging behaviors	Marina Melillo (631) 360-4656 <a href="mailto:Marina.Melillo@ddiny.org">Marina.Melillo@ddiny.org</a>
Down Syndrome Advocacy Foundation	P.O. Box 12173 Hauppauge	As needed	Family members of individuals with Down Syndrome and other Developmental Disabilities	No Fee	Nassau & Suffolk Counties Parent training and workshop Yearly conference on Best Practices in the education of children with Down Syndrome Limited Scholarships available to parents of children with Down Syndrome	Jenny Andersson po box 12173 Hauppauge NY 11788 516-983-7008 <a href="mailto:dsaf03@gmail.com">dsaf03@gmail.com</a>



# FAMILY COUNSELING, TRAINING & ADVOCACY

AGENCY	LOCATION	SERVICE HOURS	POPULATION SERVED	FEE	COMMENTS	CONTACT PERSON
<b>Family Counseling, Training &amp; Advocacy:</b> Provides counseling, training, behavior management and advocacy services for the family and the developmentally disabled person, at the agency site or in the home.						
East End Disability Associates (EEDA)	Location varies by service	As scheduled	Intellectually disabled adults and family	No Fee	East Suffolk Long Island East of William Floyd Parkway Series of events that educate families in either Education, Social, or Advocacy topics.	Joy O'Shaughnessy (631) 369-7345 x208
Family Residences & Essential Enterprises, Inc. (FREE)	191 Sweet Hollow Rd. Old Bethpage	Day & Evening	All Ages Prader-Willi Syndrome	No Fee	Nassau & Suffolk Counties In home intervention, parent & family counseling and training	<a href="mailto:Anu.Arnold@familyres.org">Anu Arnold, MA, LMSW</a> (516) 870-1600 x.1880 x.1623 <a href="mailto:AArnold@familyres.org">AArnold@familyres.org</a>
Family Counseling Services- a division of Family Services League	William Floyd Family Center 338 Blanco Drive Mastic Beach, NY 11951	Parent Support group runs 8 sessions at a time and 3 times per year. Mondays 6p-7p	Ages: 5-18 Developmental Disabilities	Included in fee for social skills program	Parent support group offered in conjunction with social skills group  Does not accept individuals enrolled in self direction	Brianna Palisi  (631) 998-0016  <a href="mailto:Brianna.Palisi@fsl-li.org">Brianna.Palisi@fsl-li.org</a>
Head Injury Association, Inc. (HIA)	300 Kennedy Drive Hauppauge	Mon.-Fri. 9am-5pm	Families & survivors w/ head injuries	No Fee	Nassau and Suffolk Counties "FACTS Program" Info. & referral regarding all aspects of traumatic brain injury and services offered through OPWDD. Periodic group training/informal sessions offered. Support group.	Megan Porter 631-543-7485 <a href="mailto:MPorter@HeadInjuryAsoc.org">MPorter@HeadInjuryAsoc.org</a>



# FAMILY COUNSELING, TRAINING & ADVOCACY

AGENCY	LOCATION	SERVICE HOURS	POPULATION SERVED	FEE	COMMENTS	CONTACT PERSON
--------	----------	---------------	-------------------	-----	----------	----------------

**Family Counseling, Training & Advocacy:** Provides counseling, training, behavior management and advocacy services for the family and the developmentally disabled person, at the agency site or in the home.

Long Island Advocacy Center	999 Herricks Road, Rm 108 New Hyde Park	Monday – Friday 9am – 5pm	17 years & up Developmentally Disabled and their families	No Fee	Nassau & Suffolk Counties Benefits advisement & supports for OPWDD eligibility. Does not accept individuals enrolled in self direction	Barbara Morell 516-248-2222 x22 <a href="mailto:bmorell@theliac.org">bmorell@theliac.org</a>
Parent to Parent of NYS, Inc	415A Oser Avenue Hauppauge	Mon.-Fri. 9am- 5pm	All ages All disabilities	No Fee	We provide resources, guidance, and support to parents of children with special needs through workshops and trainings, support groups, parent matching, and an informational email group.	Valerie Colavecchio <a href="mailto:vcolavecchio@ptopnys.org">vcolavecchio@ptopnys.org</a> Alissa Morris <a href="mailto:amorris@ptopnys.org">amorris@ptopnys.org</a> (631) 434-6196 1-800-559-1729
New Horizons Counseling Center	50 West Hawthorne Valley Stream	Mon.-Fri. 9am-5pm Some evenings	Developmentally Disabled individuals and their families Parent & sibling support groups	Sliding Scale for Individual Counseling No fee for groups	Nassau & Suffolk Counties Individual & family counseling & family support. Sibling support groups, linkage & referral Accepts individuals enrolled in self direction	Peggy Grosman (516) 569-6600 <a href="mailto:pgrosman@nhcc.us">pgrosman@nhcc.us</a>





# PARENT TRAINING FOR PARENTS WITH DEVELOPMENTAL DISABILITIES

AGENCY	LOCATION	AGENCY	LOCATION	AGENCY	LOCATION	AGENCY
--------	----------	--------	----------	--------	----------	--------

**Parent Training for DD Parents:** Provides parent skills and training for parents with developmental disabilities.

Long Island Advocacy Center	999 Herricks Rd., New Hyde Park	Mon.-Fri. 9am-5pm	Parents with developmental disabilities and their children	No Fee	Empowering parents with developmental disabilities to advocate for their children within the educational system Does not accept individuals enrolled in self direction	Audrey Diaz (516) 248-2222 x.10 <a href="mailto:adiaz@theliac.org">adiaz@theliac.org</a>
-----------------------------	------------------------------------	----------------------	--	--------	---	--



# IN-HOME RESPITE

AGENCY	LOCATION	AGENCY	LOCATION	AGENCY	LOCATION	AGENCY
<b>In-Home Respite:</b> Matches trained respite workers with families to provide scheduled care for individuals with developmental disabilities in their homes.						

A-1 Universal Care	400 Post Ave, Suite 302 Westbury	Days & Evening – as needed	Ages: 6-60 years Developmentally Disabled	No Fee	Nassau County Only Can serve people with 1:1 supports	Nancy Parada, (516) 338-8777, Ext. 14, <a href="mailto:nparada@a1universalcare.org">nparada@a1universalcare.org</a>
Adults and Children with Learning & Developmental Disabilities (ACLD)	807 S. Oyster Bay Rd Bethpage	Day & Evening	All Ages Developmentally Disabled	No Fee	Nassau & Suffolk Counties Voucher program Accepts individuals enrolled in self direction	Rodlane Bien Aise (516) 822-0028 x.358 <a href="mailto:bienaiser@aclid.org">bienaiser@aclid.org</a>
Bais Ezra	3611 14 <sup>th</sup> Ave Suite 550 Brooklyn	Day & Evening	All Ages Developmentally Disabled	No Fee	Nassau County Only Accepts individuals enrolled in self direction	Jesse Kenigsberg (718) 686-3487 <a href="mailto:jesse_kenigsberg@ohelfamily.org">jesse_kenigsberg@ohelfamily.org</a>
Developmental Disabilities Institute (DDI)	90 Air Park Drive Ronkonkoma	Monday through Friday 8am-12pm	Ages 3 - 7	No fee	Nassau & Suffolk Counties Project "SOAR"	Donna Sadowsky 631-580-4002 <a href="mailto:donna.sadowsky@ddiny.org">donna.sadowsky@ddiny.org</a> Christine Racca (631) 580-4004 christine.racca@ddiny.org
Haitian Americans United for Progress, Inc. (HAUP)	221-05 Linden Blvd. Cambria Heights	9am – 9pm	Ages: 3 years & up Developmentally Disabled	No Fee	Nassau & Suffolk Counties	John Fontus Program manager (718) 527-3272 X.2 <a href="mailto:jfontus@haupinc.org">jfontus@haupinc.org</a>



# IN-HOME RESPITE

AGENCY	LOCATION	AGENCY	LOCATION	AGENCY	LOCATION	AGENCY
--------	----------	--------	----------	--------	----------	--------

**In-Home Respite:** Matches trained respite workers with families to provide scheduled care for individuals with developmental disabilities in their homes.

Helen Keller Services for the Blind	One Helen Keller Way Hempstead NY 11550	24 hours a day 7 days a week	Ages: 16 and over  Developmentally Disabled	No Fee	Nassau & Suffolk Counties Trained staff provide respite services in home.	Jenna Bassolino O: (516) 485-1234 6629 C: (516) 650-0474 <a href="mailto:jbassolino@helenkeller.org">jbassolino@helenkeller.org</a>
Independent Group Home Living (IGHL)	221 North Sunrise Service Road Manorville	Day & Evening	All Ages Developmentally Disabled	\$1 per hour per child	Eastern Suffolk County	Tracey DelDuca (631) 878-0636 <a href="mailto:tdelduca@ighl.org">tdelduca@ighl.org</a>
Innovative Resources for Independence (IRI)	112-40 Francis Lewis Blvd, Queens Village, NY, 11429	As needed – 10 hours per week	9 years and up Autistic	No Fee	Nassau County Only	Claudius Campos 646-372-5487 <a href="mailto:claudius.campos@in-res.org">claudius.campos@in-res.org</a>  Estefania Tineo (917) 717-1325 <a href="mailto:etineo@in-res.org">etineo@in-res.org</a>
Nassau/Suffolk Services for the Autistic (NSSA)	The Martin C. Barell School 80 Hauppauge Road Commack	Day & Evening	Ages: 4 years & up Autistic/ Autistic Spectrum	No Fee	Nassau & Suffolk Counties Does not accept individuals enrolled in self direction	Christen McPherson (631) 462-0386 <a href="mailto:cmcpherson@nssa.org">cmcpherson@nssa.org</a>
Quality Services for the Autism Community (QSAC)	253 West 35 <sup>th</sup> Street 16 <sup>th</sup> floor New York, NY 10001	Day & Evening Weekdays Weekend	Ages: 3 years & up Autistic/PDD	No Fee	Nassau County Only Ongoing & crisis, in home respite Accepts individuals enrolled in self direction	Vicky Ramsay (718) 728-8476 x.2659 <a href="mailto:vramsay@qsac.com">vramsay@qsac.com</a>



# IN-HOME RESPITE

AGENCY	LOCATION	AGENCY	LOCATION	AGENCY	LOCATION	AGENCY
--------	----------	--------	----------	--------	----------	--------

**In-Home Respite:** Matches trained respite workers with families to provide scheduled care for individuals with developmental disabilities in their homes.

United Cerebral Palsy Association of Greater Suffolk County, Inc. (UCP of Suffolk)	250 Marcus Blvd. Hauppauge	Day & Evening	Ages: 3 to 21 years Developmentally Disabled	Voucher Reimbursement	Suffolk County Only	Jane Kay (631) 232-0011 x. 415 <a href="mailto:jkay@ucp-suffolk.org">jkay@ucp-suffolk.org</a>
--	----------------------------	---------------	---	-----------------------	---------------------	---



# OVERNIGHT FREESTANDING RESPITE

AGENCY	LOCATION	SERVICE HOURS	POPULATION SERVED	FEE	COMMENTS	CONTACT PERSON
--------	----------	---------------	-------------------	-----	----------	----------------

**Overnight Freestanding Respite:** Scheduled respite in certified agency operated respite homes, weekends or weekdays.

Association for the Help of Retarded Children of Nassau County (AHRC Nassau) (Citizen's Inc.)	7 Fisher Lane Levittown	Scheduled as needed, overnight or weekly	Ages: 21 years & up no medical or behavioral problems requiring special supervision	No Fee	Nassau County Only Day respite is also available on weekends	Jillian Peneghetti (516) 653-0141 <a href="mailto:ahrc4420r@ahrc.org">ahrc4420r@ahrc.org</a>
Association for the Help of Retarded Children of Suffolk County (AHRC Suffolk)	1210 Portion Rd. Holtsville	7 days a week – except major holidays	Ages: 21 years & up Independent in ADL skills, no medical or behavioral problems requiring special supervision	No Fee	Suffolk County Only Transportation only available from AHRC Day Programs in Bohemia Ambulatory	Erin Rega (631) 585-0100 x557 <a href="mailto:erega@suffahrc.org">erega@suffahrc.org</a>
East End Disability Associates, Inc. (EEDA)	32 Circle Drive Shoreham	Fri – Mon. 3 pm – 9am	Children and adults Developmentally disabled	No Fee	Nassau & Suffolk Counties	(631) 369-7345 (631) 369-2292
Family Residences & Essential Enterprises, Inc (FREE)	1363 North Jerusalem Road E. Meadow	Scheduled as needed overnight or weekly 24/7	Ages: 8 years & up Developmentally Disabled No medical or behavioral problems requiring special supervision	No Fee	Nassau & Suffolk Counties Ambulatory	Dana McCartan (516) 870 1600 ext. 1880 <a href="mailto:Dmccartan01@familyres.org">Dmccartan01@familyres.org</a>
Independent Group Home Living, Inc. (IGHL)	1350 Wm. Floyd Pkwy. Shirley	Scheduled as needed hourly (Minimum 8 hrs.) Overnight or weekly	Ages: 3 years & up Developmentally Disabled	No Fee	Nassau & Suffolk Counties Ambulatory	Tracey DelDuca (631) 878-0636 <a href="mailto:tdelduca@ighl.org">tdelduca@ighl.org</a> House #: (631) 878-8886



# OVERNIGHT FREESTANDING RESPITE

AGENCY	LOCATION	SERVICE HOURS	POPULATION SERVED	FEE	COMMENTS	CONTACT PERSON
--------	----------	---------------	-------------------	-----	----------	----------------

**Overnight Freestanding Respite:** Scheduled respite in certified agency operated respite homes, weekends or weekdays.

Independent Group Home Living, Inc.	138 Holbrook Rd. Holbrook, NY (631) 467-1205	Scheduled as needed hourly (Minimum 8 hrs.) overnight or weekly	Ages: 3 years & up Developmentally Disabled	No Fee	Nassau & Suffolk Counties Non-Ambulatory	Tracey DelDuca (631) 878-0636 <a href="mailto:tdelduca@ighl.org">tdelduca@ighl.org</a> <a href="mailto:Michelle.DiGrantomasso@ighl.org">Michelle DiGrantomasso</a> (631) 878-0636
Long Island Developmental Disabilities Services Office (LIDDSO)	Melville and Center Moriches	Open weekends Friday 4pm to Sunday 4pm	All Ages Developmentally Disabled	No Fee	Nassau & Suffolk Counties Ambulatory	Regina Santo (631) 385-3125 <a href="mailto:regina.santo@opwdd.ny.gov">regina.santo@opwdd.ny.gov</a>
United Cerebral Palsy Association of Greater Suffolk (UCP of Suffolk)	159 Indian Head Road Commack	Open 24 hours a day 7 days a week	Ages: 10 years & up Developmentally Disabled	No Fee	Nassau & Suffolk Counties Non-ambulatory Medically involved	Katelyn Owens (631) 543-4500 x286 <a href="mailto:kowens@ucp-suffolk.org">kowens@ucp-suffolk.org</a>
YAI -National Institute for People w/Disabilities (YAI/NIPD)	211 Old South Path Melville	Open Thursday - Tuesday 3pm - 10am Open 7 days through the summer	Ages: Pre-School to Adults All Developmental Disabilities	No Fee	Nassau & Suffolk Counties One emergency bed per week	Stephen Higgins (631) 423-0460 <a href="mailto:stephen.higgins@yai.org">stephen.higgins@yai.org</a>
YAI -National Institute for People w/Disabilities (YAI/NIPD)	2040 Edith Place Merrick	Friday 3pm through Monday 10am	All Ages All Developmental Disabilities	No Fee	Nassau County Only 5:2 staffing Wheelchair accessible	Stephen Higgins (631) 423-0460 <a href="mailto:stephen.higgins@yai.org">stephen.higgins@yai.org</a>



# WEEKEND & RECREATION RESPITE PROGRAMS

AGENCY	LOCATION	SERVICE HOURS	POPULATION SERVED	FEE	COMMENTS	CONTACT PERSON
--------	----------	---------------	-------------------	-----	----------	----------------

**Respite Recreation:** Provides care through recreation and social activities at various agencies in Nassau and Suffolk Counties.

A-1 Universal Care, Inc.	400 Post Ave, Suite 302, Westbury, NY 11590	Saturdays Only 10am – 3pm	Ages: 14 & up Developmentally Disabled	No Fee	Nassau County Only	Donna Harris (516) 338-8777 x 12 <a href="mailto:dharris@a1universalcare.org">dharris@a1universalcare.org</a>
Association for Children with Down Syndrome (ACDS)	4 Fern Place Plainview	Meets 2x a month on Sundays	Ages: 15-21 years Developmentally Disabled	Varies accord to activity	Nassau & Suffolk Counties ICE Program (Integrated Community Experience)	Brian Laubis (516) 605-2391 <a href="mailto:blaubis@acds.org">blaubis@acds.org</a>
Association for Children with Down Syndrome (ACDS)	4 Fern Place Plainview	Saturdays 10am-2pm	Ages: 5 years and older	No Fee	Nassau and Suffolk Counties Arts & Crafts, music, computers, cooking	Brian Laubis (516) 605-2391 <a href="mailto:blaubis@acds.org">blaubis@acds.org</a>
Association for Children with Down Syndrome (ACDS)	270 Washington Avenue Plainview	Friday 6:30pm – 9:30pm Jan – April	Teenage and Adults Down Syndrome & Developmentally Disabled	Fee	Nassau & Suffolk Counties Drop-in-lounge Karaoke – socialization	Brian Laubis (516) 605-2391 <a href="mailto:blaubis@acds.org">blaubis@acds.org</a>
Brookville Center for Children's Services	189 Wheatley Rd Brookville, NY 11545	Saturdays 10am-3pm	Ages: 5 – 21 years Developmentally Disabled Autism spectrum	No Fee	Nassau & Suffolk Counties Wheelchair Accessible Respite Recreation Program	Ed Hackimer (516) 626-1075 x3353 <a href="mailto:ehackimer@brookvillecenter.org">ehackimer@brookvillecenter.org</a>  Marianne R. Klotz (516) 626-1075 x.3350 <a href="mailto:mklotz@brookvillecenter.org">mklotz@brookvillecenter.org</a>



# WEEKEND & RECREATION RESPITE PROGRAMS

AGENCY	LOCATION	SERVICE HOURS	POPULATION SERVED	FEE	COMMENTS	CONTACT PERSON
--------	----------	---------------	-------------------	-----	----------	----------------

**Respite Recreation:** Provides care through recreation and social activities at various agencies in Nassau and Suffolk Counties.

Brookville Center for Children Services	189 Wheatley Rd Brookville Cissy Birnbaum Building	Alternate Saturdays 9am – 1pm 2 eight session programs Sept to Dec & Feb to May	Ages: 5-18 years Autism Spectrum Disorder	No Fee	Recreation/Social Skills Program Peer mentors assist the children in social settings Activities include: playground, arts & crafts, cooking and games No transportations and must provide own lunch	Sherry Black (516) 626-1075 x.2410 <a href="mailto:sblack@brookvillecenter.org">sblack@brookvillecenter.org</a> Jennifer Moore x.3327 <a href="mailto:jmoore@brookvillecenter.org">jmoore@brookvillecenter.org</a> Marianne Klotz x.3351 <a href="mailto:mklotz@brookvillecenter.org">mklotz@brookvillecenter.org</a>
Central Nassau Guidance & Counseling Services, Inc.	Starry Night Café 950 S. Oyster bay Rd Hicksville	Thur: 5-9pm Fri: 4 – 11pm Sat: 4-11pm	Ages: 18 years & up Developmentally Disabled	No fee for program	Nassau & Suffolk Counties Individual-operated coffee house, nightclub environment catering to the creative talents of persons with disabilities Food and beverages can be purchased by patron	Lina Vinas 516-822-6111 ext. 1251 <a href="mailto:Lvinas@centralnassau.org">Lvinas@centralnassau.org</a>
Developmental Disabilities Institute (DDI)	75 Landing Meadow Road Smithtown	Monday, Wednesday & Friday 4pm – 7pm	Ages: 18 years & up Developmentally Disabled	No Fee	Athletics academy focusing on health & fitness. Rotating bimonthly sports schedule.	Julie Robinson (631) 870-6026 <a href="mailto:Julie.robinson@ddiny.org">Julie.robinson@ddiny.org</a>  Steve Gagas (631) 360-4641 <a href="mailto:Stamatios.Gagas@ddiny.org">Stamatios.Gagas@ddiny.org</a>
Developmental Disabilities Institute (DDI)	90 Air Park Drive Ronkonkoma	Saturday's 9am-12pm	Ages: 3 to 7 years	No fee	Nassau & Suffolk Counties Project "SOAR"- Saturday recreation program	Donna Sadowsky 631-580-4002 <a href="mailto:donna.sadowsky@ddiny.org">donna.sadowsky@ddiny.org</a> Christine Racca (631) 580-4004 <a href="mailto:Christine.racca@ddiny.org">Christine.racca@ddiny.org</a>





# WEEKEND & RECREATION RESPITE PROGRAMS

AGENCY	LOCATION	SERVICE HOURS	POPULATION SERVED	FEE	COMMENTS	CONTACT PERSON
--------	----------	---------------	-------------------	-----	----------	----------------

**Respite Recreation:** Provides care through recreation and social activities at various agencies in Nassau and Suffolk Counties.

East End Disability Associates, Inc. (EEDA)	Site rotates throughout Eastern Suffolk County based on family need	10am-3pm 20 Saturdays a year	Ages: 5-21 years Developmentally Disabled	No Fee	Families need to provide transportation	Annettal Spencer <a href="mailto:AnnettalS@eed-a.org">AnnettalS@eed-a.org</a> (631)369-7345 x207
Disability Associates, Inc. (EEDA)	784 Harrison Avenue Riverhead	3 evenings a week 5pm – 7pm	18 years & up Developmentally Disabled	No Fee	Suffolk County East End Adult Socialization Program	Shoshannah Jacobs (631) 591-2834 <a href="mailto:shoshannahj@eed-a.org">shoshannahj@eed-a.org</a> Kimberly Schiblier <a href="mailto:kimberlys@eed-a.org">kimberlys@eed-a.org</a>
East End Special Players	Southampton Senior Citizen's Center Bridgehampton/Sag Harbor Turnpike Southampton	Saturdays 11am – 3pm	Adults Developmentally Disabled	No Fee	Other locations for theatrical program  Writing collaboratively and produce original plays  Accepts individuals enrolled in self direction	Matthew Kuriloff 631-320-6099 <a href="mailto:mkuriloff@icloud.com">mkuriloff@icloud.com</a> Paul Rogers 631-726-4609 <a href="mailto:paul@chaleffandrogers.com">paul@chaleffandrogers.com</a> Hilary Jackson (631) 726-4477
Economic Opportunity Council (EOC)	320 Carlton Avenue Suite 7800 Central Islip	Saturdays 10am – 5pm	Ages: 15 years & up Developmentally Disabled	No Fee	Nassau & Suffolk Counties Transportation & Lunch provided Participants can also hire their own staff and schedule program times as needed	Simone Holder <a href="mailto:sholder@eoc-suffolk.com">sholder@eoc-suffolk.com</a> Cicely Hobbs (631) 666-6471 x.602 <a href="mailto:chobbs@eoc-suffolk.com">chobbs@eoc-suffolk.com</a>



# WEEKEND & RECREATION RESPITE PROGRAMS

AGENCY	LOCATION	SERVICE HOURS	POPULATION SERVED	FEE	COMMENTS	CONTACT PERSON
--------	----------	---------------	-------------------	-----	----------	----------------

**Respite Recreation:** Provides care through recreation and social activities at various agencies in Nassau and Suffolk Counties.

EPIC LI	1500 Hempstead Turnpike, East Meadow NY 11554	Alternate Saturdays 10 am-3pm	Ages: 18 years & up Developmentally Disabled	No fee	Nassau & Suffolk Counties No transportation Lunch provided	Debbie-Ann Chang (516) 739-7733 x1328 <a href="mailto:dchang@epicli.org">dchang@epicli.org</a>
Family Residences & Essential Enterprises, Inc. (FREE)	1404 Stony Brook Road, Stony Brook NY 11790 & 120 Plant Ave Hauppauge	Saturdays 10:30am - 1:30pm	Ages: 5 years & up Developmentally Disabled	No Fee	Suffolk County Only	Danielle Penesky 631-273-3700 ext. 3635 <a href="mailto:dpenesky01@familyres.org">dpenesky01@familyres.org</a>  Caitlin Eamotte <a href="mailto:Ceamotte01@familyres.org">Ceamotte01@familyres.org</a> 631-273-4098
Family Residences & Essential Enterprises, Inc. (FREE)	Saddle Rock Ranch 41 Coram Swezeytown Road Coram	Mon - Fri 9am – 5pm Saturday 10am – 2:30pm	Ages: 5 years and up Developmentally Disabled	\$40 per session /no fee	Nassau & Suffolk Counties – Therapeutic Riding Program/Pet Therapy	Daniel Twitchell (631) 345-0318 <a href="mailto:Dtwitchell01@familyres.org">Dtwitchell01@familyres.org</a>
Family Residences & Essential Enterprises, Inc. (FREE)	191 Sweet Hollow Rd. Old Bethpage	Monday Evenings 6pm-9pm	14 years & up Autism spectrum disorders and other mild Developmental Disabilities	No fee	Nassau & Suffolk Counties Fully accessible Includes open-microphone, karaoke, musical & dance performances, poetry readings, etc A selection of creative and healthy snacks and beverages provided	Sue Binder (516) 870-1667 <a href="mailto:sbinder01@familyres.org">sbinder01@familyres.org</a>



# WEEKEND & RECREATION RESPITE PROGRAMS

AGENCY	LOCATION	SERVICE HOURS	POPULATION SERVED	FEE	COMMENTS	CONTACT PERSON
--------	----------	---------------	-------------------	-----	----------	----------------

**Respite Recreation:** Provides care through recreation and social activities at various agencies in Nassau and Suffolk Counties.

Family Residences & Essential Enterprises, Inc. (FREE)	191 Sweet Hollow Rd. Old Bethpage	Sundays Twice a month 11am-4pm	18 years & up Developmental Disabilities	No fee	Nassau & Suffolk Counties Program is fully accessible Includes sports, arts & crafts, musical & dance parties, photography, floral design, health & beauty classes, etc Also includes creative & healthy snacks and beverages	Sue Binder (516) 870-1667 sbinder01@familyres.org
Family Counseling Services- a division of Family Services League	Center Moriches, NY	2 Sundays per month from 10:30am-12pm (Off during July)	Ages: 5-18 Developmental Disabilities	No Fee	Respite program offered at Kidnastics  Does not accept individuals enrolled in self direction	Brianna Palisi (631) 998-0016 <a href="mailto:Brianna.Palisi@fsl-li.org">Brianna.Palisi@fsl-li.org</a>
Friedberg Jewish Community Center	15 Neil Court Oceanside	After School Weekdays 3pm – 6pm & Sundays	Teens on the Autism Spectrum, or with other Developmental Disabilities	No Fee	After school enrichment clubs, Sunday social clubs, life-skills workshop  Art Class - Mondays 4:30 pm - 5:30 pm  Steps to Success Life Skills - Tuesdays 5:30 pm - 6:30 pm  Theater Class - Wednesdays 5 pm - 6 pm	Marcy Hallerman (516) 634-4173 <a href="mailto:mhallerman@friedbergjcc.org">mhallerman@friedbergjcc.org</a>



## WEEKEND & RECREATION RESPITE PROGRAMS

AGENCY	LOCATION	SERVICE HOURS	POPULATION SERVED	FEE	COMMENTS	CONTACT PERSON
--------	----------	---------------	-------------------	-----	----------	----------------

**Respite Recreation:** Provides care through recreation and social activities at various agencies in Nassau and Suffolk Counties.

					<p>Sports and Fitness Class - 6 pm - 7 pm</p> <p>Peers Program Sundays (two times per month) 12 pm - 2pm</p> <p>Sunday Social Program Sundays 2 pm - 4 pm</p>	
Eden II/Genesis	600 Newbridge Rd East Meadow, NY 11554	24 trips per year 9am – 3pm	Ages: 5 and up Autism	\$40 per trip	Nassau & Suffolk Counties Community based recreation and leisure program Transportation is not provided	Jillian Panni 516-937-1397 x.1311 <a href="mailto:jpanni@eden2.org">jpanni@eden2.org</a>
Head Injury Association (HIA)	300 Kennedy Drive Hauppauge	Vary depending upon activity	Ages: 18 years & up Individuals with head injuries and Developmental Disabilities	No fee	Nassau & Suffolk Counties	Dina Nickel 631-543-2245 ext. 8744 <a href="mailto:dnickel@headinjuryassoc.org">dnickel@headinjuryassoc.org</a>
Helping Hands Behavioral Outreach, Inc	229 Laurel Rd, East Northport, NY 11731	Saturday teens 9-2, Sunday children 9-2	Ages: 5 – 21 years Individuals with Autism and Developmental Disability	Sliding Scale	Includes art & music therapy, behavior goal planning, one to one staffing, recreational events, dance, cooking No Transportation Accepts individuals enrolled in self direction	Jennifer Conner (631) 659-3337 <a href="mailto:jconner@helpinghandscildren.com">jconner@helpinghandscildren.com</a>



# WEEKEND & RECREATION RESPITE PROGRAMS

AGENCY	LOCATION	SERVICE HOURS	POPULATION SERVED	FEE	COMMENTS	CONTACT PERSON
--------	----------	---------------	-------------------	-----	----------	----------------

**Respite Recreation:** Provides care through recreation and social activities at various agencies in Nassau and Suffolk Counties.

Human First, Inc.	128 Atlantic Avenue Lynbrook	Saturdays 9am – 4pm	Adults & Children Developmentally Disabled	No Fee	Transportation & lunch provided from central pick-up	Lasana Rayside (516) 823-9500 x.224 LRayside@humanfirst.us
Independent Group Home Living, Inc. (IGHL)	221 North Sunrise Service Road Manorville	Saturdays 9:30am-2:30pm Sept-May	Ages: 3 years & up Developmentally Disabled	No Fee	Suffolk County Only Transportation provided & snack	Tracey DelDuca (631) 878-0636 <a href="mailto:tdelduca@ighl.org">tdelduca@ighl.org</a> Michelle DiGiantomasso (631) 878-0636 mdigiantomasso@ighl. org
Independent Group Home Living, Inc. (IGHL)	221 North Sunrise Service Road Manorville	Vary depending on activity	Ages: 5 years & up Developmentally Disabled	None	Suffolk County Only Supported funding for community integrated activities No transportation	Tracey DelDuca (631) 878-0636 <a href="mailto:tdelduca@ighl.org">tdelduca@ighl.org</a>
Independent Group Home Living, Inc. (IGHL)	221 North Sunrise Service Road Manorville	Two Fridays a month 6pm – 10pm	Ages: 16 years & up Developmentally Disabled	Minimal fee at times	Suffolk County Only Community integrated activities Central pickup for transportation	Tracey DelDuca (631) 878-0636 <a href="mailto:tdelduca@ighl.org">tdelduca@ighl.org</a> Michelle DiGiantomasso (631) 878-0636
Independent Group Home Living, Inc. (IGHL)	221 North Sunrise Service Road Manorville	2 trips per year	Ages: 16 years & up Developmentally Disabled	No Fee	Suffolk County Only Overnight travel programs	Tracey DelDuca (631) 878-0636 <a href="mailto:tdelduca@ighl.org">tdelduca@ighl.org</a> Michelle DiGiantomasso (631) 878-0636
Independent Group Home Living, Inc. (IGHL)	221 North Sunrise Service Road Manorville	Varies depending on activity	Ages: 16 years & up Developmental Disabled	Cost varies on activity	Suffolk County Only Community integrated activities 1:1 Transportation	Tracey DelDuca (631) 878-0636 <a href="mailto:tdelduca@ighl.org">tdelduca@ighl.org</a> Michelle DiGiantomasso (631) 878-0636



# WEEKEND & RECREATION RESPITE PROGRAMS

AGENCY	LOCATION	SERVICE HOURS	POPULATION SERVED	FEE	COMMENTS	CONTACT PERSON
--------	----------	---------------	-------------------	-----	----------	----------------

**Respite Recreation:** Provides care through recreation and social activities at various agencies in Nassau and Suffolk Counties.

Independent Group Home Living, Inc. (IGHL)	221 North Sunrise Service Road Manorville	Varies depending on activity	Ages: 10 years & up Autism & Autism Spectrum Disorder	No Fee	Sports Activities & Fitness Program Four sessions per year (Summer/Fall/Winter/Spring) Lasts approx 3 weeks	Tracey DelDuca (631) 878-0636 <a href="mailto:tdelduca@ighl.org">tdelduca@ighl.org</a> Michelle DiGiantomasso (631) 878-0636
IRIE	Sundance Stables 37 North St Manorville	Mon-Thurs, Sat *By appointment only*	Developmentally Disabled Children	Sliding Scale	Therapeutic Horseback Riding Equestrian Related Activities Accepts individuals enrolled in self direction	Joy Rootkowski (631) 871-1916 <a href="mailto:iriehorses@aol.com">iriehorses@aol.com</a>
Kulanu	620 Central Avenue Cedarhurst	Sundays (during school year)  9am-12pm	Individuals with Intellectual & Developmental Disabilities, ages 4-21	\$25 per session	Wheelchair accessible. Program has full gym, sensory rooms, offsite activities with community volunteers and professionals Accepts individuals enrolled in self direction	Amy Eisenberg (516) 569-3083 x 138 <a href="mailto:amy@kulanukids.org">amy@kulanukids.org</a>
Life's WORC	1501 Franklin Ave. Garden City	Saturdays 11am-4 pm	Ages: 16 years - Adult Mild to Moderate Mental Retardation & Autism	No Fee	Centralized pickups in Nassau & Suffolk Counties: East Rockaway, Garden City, Deer Park A variety of community trips once per month. Individuals for this program must be independent enough to maintain basic safety with a small group in the community and	Claire Ascetta 516-741-9000 x8220 <a href="mailto:cascetta@lifesworc.org">cascetta@lifesworc.org</a>



# WEEKEND & RECREATION RESPITE PROGRAMS

AGENCY	LOCATION	SERVICE HOURS	POPULATION SERVED	FEE	COMMENTS	CONTACT PERSON
--------	----------	---------------	-------------------	-----	----------	----------------

**Respite Recreation:** Provides care through recreation and social activities at various agencies in Nassau and Suffolk Counties.

					should need minimal assistance with self-care. Accepts individuals enrolled in self direction	
Life's WORC	Garden City (Creative Arts Program)	Wednesday – 4:30pm to 6:30 pm Saturdays – 11 am to 1pm Operates from September to June	Ages 5-16 years Autism Only	No Fee	Creative Arts Program Nassau 3:1 staff to children ratio and an additional on site supervisor Each group spends half of the session with an Art Instructor and the other half with a Music Instructor. Support staff assist during each activity. Accepts individuals enrolled in self direction	Claire Ascetta (516) 741-9000 x.8220 <a href="mailto:cascetta@lifesworc.org">cascetta@lifesworc.org</a>
Life's WORC	Garden City Family Center for Autism & Bay Shore YMCA (Making Connections)	2 Saturdays a month 11am – 2pm	Ages 5-16 years Autism Only	No Fee	Nassau & Suffolk Counties 3:1 staff to children ratio and an additional on site supervisor Promote socialization skills - Lightly structured fun activities for promotion of communication and social skills. Accepts individuals enrolled in self direction	Claire Ascetta 516-741-9000 x.8220 <a href="mailto:binderjit@lifesworc.org">binderjit@lifesworc.org</a>



# WEEKEND & RECREATION RESPITE PROGRAMS

AGENCY	LOCATION	SERVICE HOURS	POPULATION SERVED	FEE	COMMENTS	CONTACT PERSON
--------	----------	---------------	-------------------	-----	----------	----------------

**Respite Recreation:** Provides care through recreation and social activities at various agencies in Nassau and Suffolk Counties.

Long Island Toy Lending Center for Children with Disabilities	Farmingdale Library 116 Merritts Road Farmingdale & Town of Hempstead E.Marina, 1501 Lido Blvd.,Point Lookout	Mon.-Fri. 9am-6pm	Ages: infants -15 yrs Developmentally Disabled	Sliding Scale	Nassau & Suffolk Counties Resource Center& Toy Lending Library Respite one weeknight per month (4 hours per night) Accepts individuals enrolled in self direction	Colleen Moseman (516) 889-8287 <a href="mailto:litoycenr@gmail.com">litoycenr@gmail.com</a>
Maryhaven Center of Hope	455 County Road 101 Yaphank	Saturdays 10am – 2pm	Ages: 15-60 Developmentally Disabled	No Fee	Suffolk County Only Onsite & community integrated activities No transportation Wheelchair Accessible Accepts individuals enrolled in self direction	Phil Orofino (631) 924-5900 x.195 <a href="mailto:phillip.orofino@chsli.org">phillip.orofino@chsli.org</a>
Mill Neck Services	501 So. Broadway Hicksville	Wednesday evenings 6pm-9pm Saturdays 10am- 2pm 2x a month	Deaf & Developmentally Disabled	No Fee	Nassau & Suffolk Counties Recreation Café Accepts individuals enrolled in self direction	Loretta Murray (516) 922-3818 <a href="mailto:deafesq@millneck.org">deafesq@millneck.org</a> John Saal (516) 322-4003 <a href="mailto:jsaal@millneck.org">jsaal@millneck.org</a>
Nassau/Suffolk Services for the Autistic, Inc. (NSSA)	80 Hauppauge Road Commack	Jan.-June, Sept. – Dec. & July & Aug 2 sessions 2 Saturdays a month 10am – 3pm Alternating Saturday sessions	Ages: 4-21 years Autistic/ Autistic Spectrum	No fee	Nassau & Suffolk Counties Does not accept individuals enrolled in self direction	Christine Rodriguez <a href="mailto:crodriguez@nssa.net">crodriguez@nssa.net</a> 631-462-0386 ext 202 Alissa Cohen <a href="mailto:acohen@nssa.net">acohen@nssa.net</a>





# WEEKEND & RECREATION RESPITE PROGRAMS

AGENCY	LOCATION	SERVICE HOURS	POPULATION SERVED	FEE	COMMENTS	CONTACT PERSON
--------	----------	---------------	-------------------	-----	----------	----------------

**Respite Recreation:** Provides care through recreation and social activities at various agencies in Nassau and Suffolk Counties.

		as per program calendar.				
The Tiegerman School (Formally SLCD)	100 Glen Cove Ave. Glen Cove	Saturdays 10am – 3pm	Ages: 3 to 15 years Children with Autism & Developmental Disabilities	No Fee	Nassau & Suffolk Counties Recreation based and includes music, dance, gym and art	Christine Austin 516-609-2000 x.137 <a href="mailto:caustin@slcd.org">caustin@slcd.org</a>
Sid Jacobson Jewish Community Center	300 Forest Drive East Hills	Saturdays 6pm – 9pm	Ages: 9-21 years Developmentally Disabled & Autistic	No Fee	Nassau & Suffolk Counties Open for 18 Saturday nights during the year	Amanda Burns (516) 484-1545 x175 <a href="mailto:aburns@sjcc.org">aburns@sjcc.org</a>
Special Olympics – Long Island	Different Location Every Year.	One day event 10:30am-2:30pm  Practice sessions Jan-June Starts again in September	Developmentally Disabled Children & Adults	No Fee	Young Athlete Skills Tournament	Alexis Dawson 631-254-1465 x 4205 <a href="mailto:adawson@nyso.org">adawson@nyso.org</a> Lindsey Coyle (631) 254 1465 x4202
Special Olympics – Long Island	Lawrence Primary School 1 Donahue Road, Inwood NY	10am – 12pm	Developmentally Disabled Children & Adults	No Fee	The grant is used towards Transportation (buses) expenses to State Competitions 2x/year.	Alexis Dawson 631-254-1465 x 4205 <a href="mailto:adawson@nyso.org">adawson@nyso.org</a> Lindsey Coyle (631) 254 1465 x4202



# WEEKEND & RECREATION RESPITE PROGRAMS

AGENCY	LOCATION	SERVICE HOURS	POPULATION SERVED	FEE	COMMENTS	CONTACT PERSON
--------	----------	---------------	-------------------	-----	----------	----------------

**Respite Recreation:** Provides care through recreation and social activities at various agencies in Nassau and Suffolk Counties.

United Cerebral Palsy of Suffolk County (UCP of Suffolk)	250 Marcus Blvd. Hauppauge	One per month, 2 <sup>nd</sup> Thursday "Thursday Club" 3:30pm – 6:30pm	Adults Developmentally Disabled	No Fee	No Transportation	Joan Sarrica (631) 232-0011 x638 <a href="mailto:jsarrica@ucp-suffolk.org">jsarrica@ucp-suffolk.org</a>
United Cerebral Palsy of Suffolk County (UCP of Suffolk)	250 Marcus Blvd. Hauppauge	10am – 2pm 48 Saturdays a year	Developmentally Disabled	No Fee	Suffolk County Limited transportation Bring own lunch	Keith Jones (631) 232-0011 x.607 <a href="mailto:kjones@ucp-suffolk.org">kjones@ucp-suffolk.org</a>
United Cerebral Palsy of Suffolk County (UCP of Suffolk)	250 Marcus Blvd. Hauppauge	Saturdays 10:30am – 1:30pm 46 Saturdays Annually	Adults who are medically frail, multi-handicapped who need medical monitoring, physical care and assistance	No Fee	Limited transportation provided within 10 mile radius or families can transport. Max of 12 individuals per Saturday Families to provide lunch, diapers, medications, etc	Keith Jones (631) 232-0011 x.607 <a href="mailto:kjones@ucp-suffolk.org">kjones@ucp-suffolk.org</a>
Variety Child Learning Center	47 Humphrey Dr. Syosset	18 Sundays September to June 9:30am – 3:30pm	Ages: 3-10 years Developmentally Disabled Autism Spectrum Also can have non-disabled siblings	Please call or email for sibling program fee	Children bring lunch, snack is provided Peanut free building Some staff bilingual Does not accept individuals enrolled in self direction	Rebecca Esquillin (516)921-7171 x. 2104 <a href="mailto:resquillin@vclc.org">resquillin@vclc.org</a>
YAI – National Institute for People with Disabilities (YAI) Independent Living Program	Session Nassau: 475 Union Ave. Westbury  Session Suffolk: 555 Washington Ave. Brentwood	Mondays 6:30 pm – 8:30 pm	Ages: 18 & up Developmentally Disabled Autism Spectrum Disorder	No Fee	Closed on holidays Transportation not included Sessions alternate between Nass & Suff Independent Living Program (ILP). This	Stacy Hagan <a href="mailto:stacy.hagan@yai.org">stacy.hagan@yai.org</a> (631) 967-7109

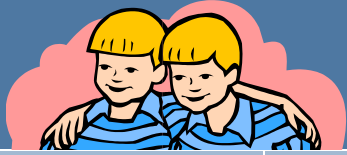


# WEEKEND & RECREATION RESPITE PROGRAMS

AGENCY	LOCATION	SERVICE HOURS	POPULATION SERVED	FEE	COMMENTS	CONTACT PERSON
--------	----------	---------------	-------------------	-----	----------	----------------

**Respite Recreation:** Provides care through recreation and social activities at various agencies in Nassau and Suffolk Counties.

					<p>is a 26 week course which provides the opportunity for adults, 18 years of age and older, to learn and develop in a group setting. The program's curriculum is designed to help individuals acquire the skills needed to successfully live on their own. The 26 week course includes topics such as: budgeting, nutrition &amp; kitchen safety, decision making, problem solving, community safety, stress management, self esteem, relationships, and self-care.</p>	
--	--	--	--	--	--	--

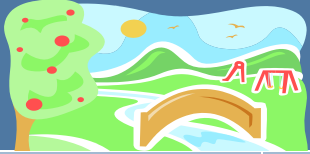


## SIBLING SUPPORT

AGENCY	LOCATION	SERVICE HOURS	POPULATION SERVED	FEE	COMMENTS	CONTACT PERSON
--------	----------	---------------	-------------------	-----	----------	----------------

**Sibling Support:** Provides services to siblings through support groups, individual counseling or recreational activities.

Big Brothers- Big Sister of Long Island	145 Sycamore Ave. Islandia  Main Office: 25 Carle Road in Westbury 11590	Office Hours: Mon, Tues & Fri 9am – 5pm  Wed & Thurs 9am – 8:30pm	Ages: 7-14 years Siblings of Developmentally Disabled individuals	No Fee	Nassau & Suffolk Counties Siblings share a weekly outing & activity with a A Big Brother or Big Sister	Josephine Todisco (516) 731-7880 x220 <a href="mailto:jtodisco@bbbsli.org">jtodisco@bbbsli.org</a>
Quality Services for the Autism Community (QSAC)	872 Atlantic Ave Baldwin	Meet first and third Monday of the month 7pm – 9pm	Parent and sibling support groups for families that have a child or sibling with Autism Spectrum Disorder and childcare for the child with autism	No Fee	Nassau & Suffolk Counties	Violeta Macias 516-301-5786 ext: 1719 <a href="mailto:vmacias@qsac.com">vmacias@qsac.com</a>



# TOWN RECREATION

AGENCY	LOCATION	SERVICE HOURS	POPULATION SERVED	FEE	COMMENTS	CONTACT PERSON
--------	----------	---------------	-------------------	-----	----------	----------------

**Town Recreation:** Provides recreation and social activities to town residents with developmental disabilities.

Suffolk County Council Boy Scouts Special Needs Division 7 Scouting Blvd. Medford	Various sites in Suffolk	Days & Evenings Depending on the site	Ages: 6 years & up (boys) Co-ed Ages: 14 years & up Developmentally Disabled	Registration Fee	Suffolk County Only Social & recreational activities that work on fostering life skills, self sufficiency and good citizenship Does not accept individuals enrolled in self direction	Lauren Vlachos (631) 924-7000 x 137 <a href="mailto:vlachos@bsamail.org">vlachos@bsamail.org</a>
Town of Babylon Human & Therapeutic Services, Inc. 281 Phelps Lane, Room #219 North Babylon NY 11703	Various schools in the town of Babylon. Town of Babylon Annex & Babylon Bowling Alley	Evenings Mondays, Wednesdays & Fridays	Ages: 7 years & up Developmentally Disabled	Registration Fee \$15 \$20 for Bowling	Transportation provided: Arts & crafts, field trips and bowling Accepts individuals enrolled in self direction	Claire McKeon 631-422-7660 <a href="mailto:cmckeon@townofbabylon.com">cmckeon@townofbabylon.com</a> Laura Wexelbaum 631-893-1050 <a href="mailto:lwexelbaum@townofbabylon.com">lwexelbaum@townofbabylon.com</a>
Town of Brookhaven Dept. Of Parks, Recreation & Sports & Cultural Resources 286 Hawkins Rd. Centereach, ny	Various sites in Town of Brookhaven	Evenings & Saturdays	Ages: 15 years & up Developmentally Disabled	Activity Based Fee	Bowling, swimming, dances & other activities Accepts individuals enrolled in self direction	Elaine Gallagher (631) 451-6108 <a href="mailto:egallagher@brookhavenny.gov">egallagher@brookhavenny.gov</a>
Town of Hempstead Dept. Of Recreation (Anchor) 630 Lido Blvd Lido Beach	Camp Anchor Town Park at Lido Beach	Mon – Fri 9am-3pm 6 week in summer - July & August	Ages: 5 years & up Developmentally Disabled	\$125 fee	Transportation provided	Maryann Hanson (516) 801-5644 <a href="mailto:mhanson@tohmail.org">mhanson@tohmail.org</a>



# TOWN RECREATION

AGENCY	LOCATION	SERVICE HOURS	POPULATION SERVED	FEE	COMMENTS	CONTACT PERSON
--------	----------	---------------	-------------------	-----	----------	----------------

**Town Recreation:** Provides recreation and social activities to town residents with developmental disabilities.

Town of Hempstead Dept. Of Recreation (Anchor)630 Lido Blvd Lido Beach	School Year Recreation Programs	Mon-Fri Afternoon & evenings 9am – 2:30 Saturdays – (Oct-May)	Ages: 5 years & up,Developmental ly Disabled	\$60 fee (after school), \$20 fee Saturday	Transportation provided	Maryann Hanson (516) 801-5644 <a href="mailto:mhanson@tohmail.org">mhanson@tohmail.org</a>
Town of North Hempstead Dept. Of Parks & Recreation	Clinton G. Martin Park Recreation Center Marcus Ave. & New Hyde Park Rd. New Hyde Park	Sept.- June Saturdays 9am-3pm July & August – Tues.- Sat. 10am-3pm	Ages: 5 & up Developmentally Disabled	No Fee	Arts & Crafts, swimming, special events, field and summer camp Must live in North Hempstead	Barry Tussman 516-465-1529 <a href="mailto:Btussman@viscardicenter.org">Btussman@viscardicenter.org</a> Estefany Garay <a href="mailto:garaye@northhempsteadny.gov">garaye@northhempsteadny.gov</a> Elizabeth Haft (516)465-1496 <a href="mailto:ehaft@viscardicenter.org">ehaft@viscardicenter.org</a>
Town of Huntington Department of Parks & Recreation Town Hall 100 Main Street Huntington	Young Teen Program Maplewood Elementary  Summer Camp Camp Bright Star	Saturdays Oct – June 10:30am–1:30pm  6 weeks M-F 9am – 2:30pm	Ages:10-25 years  Ages: 6 - adult Developmentally Disabled	Yes	Saturday Recreation Program \$80 for resident \$100 for non-resident  Summer Camp \$185 for resident \$545 for non resident	Greg Wagner (631) 351-3094 <a href="mailto:GWagner@huntingtonny.gov">GWagner@huntingtonny.gov</a>  <u>Program Coordinator:</u> Toni Neuschaefer (631) 516-840-9159 <a href="mailto:ttn812@aol.com">ttn812@aol.com</a>
Town of Islip Department of Human Services Division of Therapeutic Recreation	Dance only @ David Sanders Dance 4110 Sunrise Highway Oakdale	Fridays 2 sessions per day Sep – June	Ages: 6-21 years Developmentally Disabled	No Fee	Modern Dance Program Ages 6-13 5-6pm Ages 14-21 6- 7pm	Tim Mare (631) 224-5320 <a href="mailto:youthbureau@islipny.gov">youthbureau@islipny.gov</a>



# TOWN RECREATION

AGENCY	LOCATION	SERVICE HOURS	POPULATION SERVED	FEE	COMMENTS	CONTACT PERSON
--------	----------	---------------	-------------------	-----	----------	----------------

**Town Recreation:** Provides recreation and social activities to town residents with developmental disabilities.

Town of Oyster Bay Department of Community & Youth Services Group Activities Program (GAP)	Syosset & Massapequa Community Centers	Oct. - May Evenings & Saturdays Summer day camp	Ages: 5 years & up Developmentally Disabled – 4:1 Ratio, free of behavioral issues	\$150	Arts & Crafts, sports, dancing, games, bowling, swimming, drama groups 6 week, summer day camp & evening summer program, Saturday and Saturday evening respite 1x a month, field trips Accepts individuals enrolled in self direction	Mary Hurst (516) 797-7948 <a href="mailto:mhurst@oysterbay-ny.gov">mhurst@oysterbay-ny.gov</a>
Town of Oyster Bay Department of Community & Youth Services Group Activities Program (GAP)	Syosset & Massapequa Community Centers 977 Hicksville Rd., Massapequa	Fridays 6:30pm-8:30pm October – May	Ages: 5 – 20 years Autism. 2:1 Ratio, free of behavioral issues	No Fee except for field trips	Arts & crafts, dancing, bowling, and other activities Field trips are planned once a month Accepts individuals enrolled in self direction	Mary Hurst (516) 797-7948 <a href="mailto:mhurst@oysterbay-ny.gov">mhurst@oysterbay-ny.gov</a>
Town of Smithtown Recreation Department 495 Landing Ave. Smithtown, NY 11787	Various schools in Smithtown	Monday and Tuesday 6pm – 8pm Thursday Hours vary	Ages: 16 years & up Developmentally Disabled	No Fee	Socials, arts & crafts, field trips, bowling & swimming	Sue Cappelmann (631) 360-7646 <a href="mailto:suecapp@optonline.net">suecapp@optonline.net</a>



## VOUCHER REIMBURSEMENT PROGRAM

AGENCY	LOCATION	SERVICE HOURS	POPULATION SERVED	FEE	COMMENTS	CONTACT PERSON
<b>Voucher/Reimbursement:</b> Families are reimbursed for purchased goods or services for their developmentally disabled person which cannot be funded through other resources. Services in the grant are not reimbursable.						
Association for Children with Down Syndrome (ACDS) <i>Program Closing Soon</i>	665 North New Bridge Road Levittown	Mon.-Fri. 8:30am-4:30pm	All Ages Developmentally Disabled	No Fee	Nassau & Suffolk Counties Reimbursement for respite and other goods & services which cannot be funded through other resources Does not accept individuals enrolled in self-direction	Erica Lepurage (516) 605-2391 x102 <a href="mailto:elepurage@acds.org">elepurage@acds.org</a>
Association for the Help of Retarded Children of Nassau County (AHRC Nassau) (Citizen's Inc.)	115 E. Bethpage Road Plainview	9am-5pm	Developmentally Disabled Children & Adults	No Fee	Nassau County Only Reimbursement for respite & other services & goods which cannot be funded through other resources Does not accept individuals enrolled in self-direction	Jerry Powers (516) 293-2016 x.5329 <a href="mailto:jpowers@ahrc.org">jpowers@ahrc.org</a>
Association for the Help of Retarded Children of Suffolk County (AHRC Suffolk)	2900 Veterans Memorial Hwy Bohemia	8:30am- 4:30pm	Developmentally Disabled Children & Adults	No Fee	Suffolk County Only Payers of last resort for any goods & services Does not accept individuals enrolled in self-direction	Janice Vitucci  631-585-0100 x590 <a href="mailto:JVitucci@suffahrc.org">JVitucci@suffahrc.org</a>
<b>Angela's House Medically Frail Children</b>	PO Box 5052 Hauppauge	9am-5pm	Medically frail, chronically ill, technology dependent and developmentally disabled	No Fee	Nassau & Suffolk Counties Reimbursement for services & goods which cannot be funded through other resources	Barbara Squillacioti (631) 328-1069 <a href="mailto:bsquillacioti@angelashouse.org">bsquillacioti@angelashouse.org</a>





# VOUCHER REIMBURSEMENT PROGRAM

AGENCY	LOCATION	SERVICE HOURS	POPULATION SERVED	FEE	COMMENTS	CONTACT PERSON
--------	----------	---------------	-------------------	-----	----------	----------------

**Voucher/Reimbursement:** Families are reimbursed for purchased goods or services for their developmentally disabled person which cannot be funded through other resources. Services in the grant are not reimbursable.

					Does not accept individuals enrolled in self-direction	
Developmental Disabilities Institute (DDI)	90 Air Park Drive Ronkonkoma	Monday through Friday 8am-12pm	All Ages Developmentally Disabled	No fee	Nassau & Suffolk Counties Project "SOAR"- \$500 maximum – Eligible for an additional \$500 when applying to another voucher program Does not accept individuals enrolled in self-direction	Donna Sadowsky 631-580-4002 <a href="mailto:donna.sadowsky@ddiny.org">donna.sadowsky@ddiny.org</a> Christine Racca (631) 580-4004 <a href="mailto:christine.racca@ddiny.org">christine.racca@ddiny.org</a>
East End Disability Associates, Inc. (EEDA)	107 Roanoke Avenue Riverhead	9am – 5pm	Ages 3+ Medically Fragile & Developmentally Disabled	No Fee	Eastern Suffolk Only Reimbursement for services & supplies that cannot be funded through any other sources Does not accept individuals enrolled in self-direction	Joan Lucarelli (631) 369-7345 x25 <a href="mailto:JoanL@eed-a.org">JoanL@eed-a.org</a>
Family Residences & Essential Enterprises, Inc. (FREE)	191 Sweet Hollow Rd Old Bethpage	Mon.-Fri. 9am-5pm	All Ages Developmental Disabilities & Autism Spectrum Disorder	No Fee	Suffolk County Reimbursement program for families of DD children for non-Medicaid reimbursable expenses and extraordinary expenses due to the persons disability Does not accept individuals enrolled in self-direction	Kelly Lang (631) 273-1300 <a href="mailto:klang01@familyres.org">klang01@familyres.org</a> x. 3557 Robin Stone 516-870-1685



# VOUCHER REIMBURSEMENT PROGRAM

AGENCY	LOCATION	SERVICE HOURS	POPULATION SERVED	FEE	COMMENTS	CONTACT PERSON
--------	----------	---------------	-------------------	-----	----------	----------------

**Voucher/Reimbursement:** Families are reimbursed for purchased goods or services for their developmentally disabled person which cannot be funded through other resources. Services in the grant are not reimbursable.

Head Injury Association (HIA)	300 Kennedy Drive Hauppauge	Mon.-Fri. 9am-5pm	All Ages Traumatic Brain Injury & Developmentally Disabled	No Fee	Reimbursement for goods and services, Respite, Camp, etc. Does not accept individuals enrolled in self-direction	Carla Fuller 631 543 2245 ext. 4068 <a href="mailto:cfuller@headinjuryassoc.org">cfuller@headinjuryassoc.org</a>
Jewish Community Center of the Greater Five Towns	207 Grove Avenue Cedarhurst	Mon.-Thurs. 8am – 4pm	All Ages Developmentally Disabled	No Fee	Wheelchair Accessible Hebrew & Russian speakers available Does not accept individuals enrolled in self-direction	Yael Schochat (516) 569-6733x.211 <a href="mailto:yael.schochat@guraljcc.org">yael.schochat@guraljcc.org</a>
Long Island Developmental Disabilities Service Office (LIDDSO)	415A Oser Ave. Hauppauge	8am- 4:30pm	All Ages Developmentally Disabled	No Fee	Nassau & Suffolk Counties Reimbursement for services/goods Fiscal year is April 1 <sup>st</sup> to March 31 <sup>st</sup> and receipts can only be accepted within that time frame. The LIDDSO approves families only once. Does not accept individuals enrolled in self-direction	Amanda Egan <a href="mailto:Amanda.x.egan@opwd.ny.gov">Amanda.x.egan@opwd.ny.gov</a>  (631) 416-3887
SCO Family of Services	164 3 <sup>rd</sup> Avenue Brentwood	9am-5pm	Children & Adults Developmentally Disabled	No Fee	Nassau & Suffolk Counties Reimbursement for goods and services	Peggy Telesca (631) 273-2773 x. 203 <a href="mailto:patelesca@sco.org">patelesca@sco.org</a>  Susan F. Moran 631.639.3710 <a href="mailto:Smoran@sco.org">Smoran@sco.org</a>



# VOUCHER REIMBURSEMENT PROGRAM

AGENCY	LOCATION	SERVICE HOURS	POPULATION SERVED	FEE	COMMENTS	CONTACT PERSON
--------	----------	---------------	-------------------	-----	----------	----------------

**Voucher/Reimbursement:** Families are reimbursed for purchased goods or services for their developmentally disabled person which cannot be funded through other resources. Services in the grant are not reimbursable.

					Does not accept individuals enrolled in self-direction	
United Cerebral Palsy of Suffolk County (UCP of Suffolk)	250 Marcus Blvd. Hauppauge	Mon. – Fri. 8:30am – 4:30pm	Children & Adults Developmentally Disabled	No Fee	Suffolk County Only Reimbursement for goods and services Does not accept individuals enrolled in self direction	<i>Biana Elliot</i> 631-232-0011 ext.487 631-231-2348 fax <a href="mailto:belliot@ucp-suffolk.org">belliot@ucp-suffolk.org</a>
United Cerebral Palsy of Nassau County (UCP of Nassau)	380 Washington Ave Roosevelt	Mon. – Fri. 8:30am – 4:30pm	Children & Adults Developmentally Disabled	No Fee	Nassau County Only Reimbursement for goods and services Does not accept individuals enrolled in self-direction	Elissa Farina (516) 378-2000 x416 <a href="mailto:EFarina@cpnassau.org">EFarina@cpnassau.org</a>  Andrea DeLuca (516)378-2000 x385 <a href="mailto:adeluca@cpnassau.org">adeluca@cpnassau.org</a>



# NON-MEDICAID SERVICE COORDINATION

AGENCY	LOCATION	SERVICE HOURS	POPULATION SERVED	FEE	COMMENTS	CONTACT PERSON
--------	----------	---------------	-------------------	-----	----------	----------------

**Non-Medicaid Service Coordination:** Short term service coordination to assist developmentally disabled individuals with the planning for and accessing of desired services and supports.

A-1 Universal Care, Inc.	400 Post Avenue Suite 302 Westbury	Mon. – Fri. 8am – 4pm	Ages: 5-60 years Developmentally Disabled	No Fee	Nassau County Only Short term service coordination for individuals with Developmental Disabilities who are not Medicaid eligible	Frances Nicolas, (516) 338-8777, Ext. 13, <a href="mailto:fnicolas@a1universalcare.org">fnicolas@a1universalcare.org</a>
Adults & Children with Learning Disabilities (ACLD)	857 South Oyster Bay rd Bethpage, NY 11714	Mon.-Fri. 9am-5pm	Adults & Children Developmentally Disabled	No Fee	Nassau & Suffolk Counties Short term service coordination for individuals with DD who are not Medicaid eligible.	Elisa Farino 516-336-5909 ext 370 <a href="mailto:farinoe@aclid.org">farinoe@aclid.org</a>
Angela's House <b>Medically Frail Children</b>	P.O. Box 5052 Hauppauge	Mon.-Fri. 9am-5pm	Developmentally Disabled children – medically frail, technology dependent & chronically ill	No Fee	Nassau & Suffolk Counties Also does Crisis NMSC Medically Frail, Technology Dependent, Chronically Ill and Developmentally Disabled 18 years or younger	Colleen Kunkel (631) 761-0128 <a href="mailto:ckunkel@angelashouse.org">ckunkel@angelashouse.org</a>
Center for Family Support, Inc.	110 Jericho Tpke, Suite 103 Floral Park	Mon. – Fri. Varied hours	Ages: 3 years & up Developmentally Disabled individuals without Medicaid	No Fee	Nassau & Suffolk Counties	Natasha Salazar (516) 292-3000 x. 401 <a href="mailto:NSalazar@cfsny.org">NSalazar@cfsny.org</a>
Center for Rapid Recovery (CRR)	312 Greenwich St Hempstead	Mon.-Fri. 9am-5pm	All ages Developmentally Disabled	No Fee	Nassau & Suffolk Counties Short Term service coordination for DD individuals who do not have Medicaid	Doris Yeboah (516) 292-6449 x. 121 <a href="mailto:dyeboah@rapidrecovery.org">dyeboah@rapidrecovery.org</a> Andrea Newalis (516)292-6449 x110



# NON-MEDICAID SERVICE COORDINATION

AGENCY	LOCATION	SERVICE HOURS	POPULATION SERVED	FEE	COMMENTS	CONTACT PERSON
--------	----------	---------------	-------------------	-----	----------	----------------

**Non-Medicaid Service Coordination:** Short term service coordination to assist developmentally disabled individuals with the planning for and accessing of desired services and supports.

					Spanish Speakers Available	<a href="mailto:anewalis@rapidrecovery.org">anewalis@rapidrecovery.org</a>
Research Foundation for Stony Brook University (Previously Cody Center)	SUNY Stony Brook Health Sciences Center – level 11 Room 055	Mon.-Fri. 9am – 5pm	Families of children, adolescents and adults with developmental disabilities	No Fee	Suffolk County Only	Melissa Shikora  Phone: 631-444-8226 <a href="mailto:Melissa.shikora@stonybrookmedicine.edu">Melissa.shikora@stonybrookmedicine.edu</a>
Economic Opportunity Council (EOC)	320 Carlton Avenue Suite 7800 Central Islip	Mon.-Fri. 9am – 5pm	Children & Adults Developmentally Disabled	No Fee	To provide Non-Medicaid Service Coordination for individuals with developmental disabilities, assist the families in determining the supports and services needed, assist with navigating the OPWDD, HCBS Waiver program and the Department of Social Services system and obtain Medicaid to be able to transition to Medicaid Service Coordination.	Simone Holder (631) 666-6471 x.602 <a href="mailto:sholder@eoc-suffolk.com">sholder@eoc-suffolk.com</a>
Innovative Resources for Independence (IRI)	191 Bethpage-Sweet Hollow Road Old Bethpage	Mon.-Fri. 9am – 5pm	Children & Adults Developmentally Disabled	No Fee	Nassau County	Sophia Lulgjuray (718)805-6796 x4107 <a href="mailto:Sophia.Lulgjuray@in-res.org">Sophia.Lulgjuray@in-res.org</a> Ana Koessler (718)805-6796 x4107 <a href="mailto:Ana.Koessler@in-res.org">Ana.Koessler@in-res.org</a>



# NON-MEDICAID SERVICE COORDINATION

AGENCY	LOCATION	SERVICE HOURS	POPULATION SERVED	FEE	COMMENTS	CONTACT PERSON
<b>Non-Medicaid Service Coordination:</b>	Short term service coordination to assist developmentally disabled individuals with the planning for and accessing of desired services and supports.					
Kulanu	124 McGlynn Place Cedarhurst	Mon. – Thurs. 9am – 5pm Fridays 9am – 2pm Evening hours by appointment	Individuals with Developmental Disabilities, Autism Spectrum Disorders	No Fee	Nassau County	Nicole Rios  516-569-3083 x132. <a href="mailto:NicoleR@kulanukids.org">NicoleR@kulanukids.org</a>
Long Island Advocacy Center	490 Wheeler Road Hauppauge	Mon.-Fri. 9am – 5pm	Children & Adults With Developmental Disabilities and their families	No Fee	Nassau & Suffolk Does not accept individuals enrolled in self direction	Carolyn Anderson (631) 234-0467 x. 14 <a href="mailto:croth@theliac.org">croth@theliac.org</a>
Mill Neck Services for Deaf Adults	P.O. Box 193 Frost Mill Road Mill Neck	Mon.-Fri. 8am – 4pm	Deaf, Developmentally Disabled, all ages	No Fee	Nassau & Suffolk Counties Accepts individuals enrolled in self direction	Loretta Murray (516) 922-3818 <a href="mailto:deafesq@millneck.org">deafesq@millneck.org</a> John Saal (516) 322-4003 <a href="mailto:jsaal@millneck.org">jsaal@millneck.org</a>
SCO Family of Services	164 3 <sup>rd</sup> Avenue Brentwood	Mon.-Fri. 9am – 5pm	Children & Adults Developmentally Disabled	No Fee	Nassau & Western Suffolk Counties Short term service coordination for individuals with Development Disabilities who are not Medicaid eligible	Peggy Ann Telesca Direct: 631.639.3730 Office: 631.273.2506 ext: 3730  <a href="mailto:patelesca@sco.org">patelesca@sco.org</a>
United Cerebral Palsy Association of Greater Suffolk County, Inc. (UCP of Suffolk)	250 Marcus Blvd. Hauppauge	Mon-Fri 8:30am- 4:30pm	<b>NMSC for transitioning students</b> – 16 to 22 years old - High school aged children with Developmental Disabilities	No Fee	Assists High School Students and families with vocational planning and accessing needed services Does not accept	Sara Makoski (631) 232-0011 x520 <a href="mailto:SMakowski@ucp-li.org">SMakowski@ucp-li.org</a>



# NON-MEDICAID SERVICE COORDINATION

AGENCY	LOCATION	SERVICE HOURS	POPULATION SERVED	FEE	COMMENTS	CONTACT PERSON
--------	----------	---------------	-------------------	-----	----------	----------------

**Non-Medicaid Service Coordination:** Short term service coordination to assist developmentally disabled individuals with the planning for and accessing of desired services and supports.

					individuals enrolled in self direction	
YAI – National Institute for People with Disabilities (YAI)	555 Washington Ave, Suite 1 Brentwood	Mon-Fri 8:30 am – 5 pm	Children & Adults Autism	No fee	Nassau & Suffolk Counties Short term service coordination	Melissa White (631) 967-7106 <a href="mailto:melissa.white@yai.org">melissa.white@yai.org</a> Simja Bezalel (631) 967- 7122 <a href="mailto:Simja.Bezalel@yai.org">Simja.Bezalel@yai.org</a>